

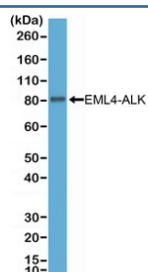
ALK Antibody / Anaplastic lymphoma kinase [clone RM361] (R20381)

Catalog No.	Formulation	Size
R20381-0.1ML	Antibody in PBS with 50% glycerol, 1% BSA and 0.09% sodium azide	100 ul

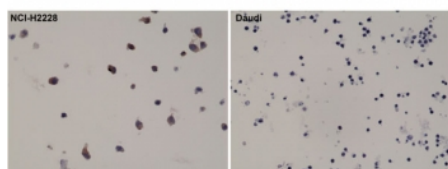
Recombinant **RABBIT MONOCLONAL**

[Bulk quote request](#)

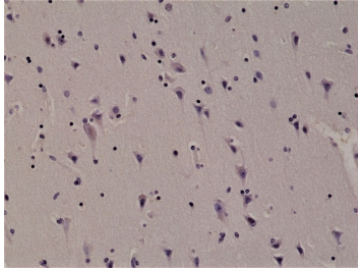
Availability	1-3 business days
Species Reactivity	Human
Format	Purified
Host	Rabbit
Clonality	Recombinant Rabbit Monoclonal
Isotype	Rabbit IgG
Clone Name	RM361
Purity	Protein A purified from animal origin-free supernatant
UniProt	Q9UM73
Localization	Cytoplasmic, nuclear
Applications	Immunohistochemistry (FFPE) : 1:500-1:1000 Western Blot : 1:1000-1:2000
Limitations	This recombinant ALK antibody is available for research use only.



Western blot testing of the non-small cell lung cancer cell line H2228 cell lysate expressing EML4-ALK variant 3, using recombinant ALK antibody at 1:2000 dilution.



Immunohistochemical staining of FFPE NCI-H2228 cells (expressing EML4-ALK variant 3) and Daudi cells (ALK negative) with recombinant ALK antibody.



IHC staining of FFPE human brain tissue with recombinant ALK antibody at 1:1000.

Description

This antibody reacts human total ALK protein including ALK fusion proteins.

Application Notes

The stated application concentrations are suggested starting points. Titration of the recombinant ALK antibody may be required due to differences in protocols and secondary/substrate sensitivity.

Immunogen

A peptide corresponding to the C-terminus of human ALK (Anaplastic lymphoma kinase) was used as the immunogen for the recombinant ALK antibody.

Storage

Store the recombinant ALK antibody at -20°C.