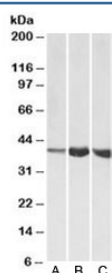


Aldolase A Antibody (R34916)

Catalog No.	Formulation	Size
R34916-100UG	0.5 mg/ml in 1X TBS, pH7.3, with 0.5% BSA (US sourced) and 0.02% sodium azide	100 ug

[Bulk quote request](#)

Availability	1-3 business days
Species Reactivity	Human, Mouse, Rat
Predicted Reactivity	Cow, Dog
Format	Antigen affinity purified
Clonality	Polyclonal (goat origin)
Isotype	Goat Ig
Purity	Antigen affinity
Gene ID	226
Applications	Western Blot : 1-3ug/ml ELISA (peptide) LOD : 1:32000
Limitations	This Aldolase A antibody is available for research use only.



Western blot testing of A) human, B) mouse and C) rat skeletal muscle lysates with Aldolase A antibody at 1ug/ml. Predicted molecular weight: ~40kDa.

Description

Additional name(s) for this target protein: Fructose-bisphosphate aldolase A; ALDOA

Application Notes

Optimal dilution of the Aldolase A antibody should be determined by the researcher.

Immunogen

Amino acids NSLACQGKYTPSGQ were used as the immunogen for this Aldolase A antibody.

Storage

Aliquot and store the Aldolase A antibody at -20oC.