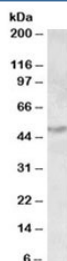


## ALDH9A1 Antibody (R35319)

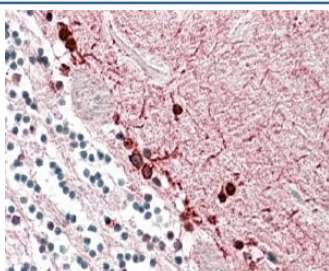
Catalog No.	Formulation	Size
R35319-100UG	0.5 mg/ml in 1X TBS, pH7.3, with 0.5% BSA (US sourced) and 0.02% sodium azide	100 ug

[Bulk quote request](#)

Availability	1-3 business days
Species Reactivity	Human
Predicted Reactivity	Cow
Format	Antigen affinity purified
Clonality	Polyclonal (goat origin)
Isotype	Goat Ig
Purity	Antigen affinity
Gene ID	223
Applications	Western Blot : 0.3-1ug/ml Immunohistochemistry (FFPE) : 3-5ug/ml ELISA (peptide) LOD : 1:16000
Limitations	This ALDH9A1 antibody is available for research use only.



Western blot testing of human kidney lysate with ALDH9A1 antibody at 0.3ug/ml. Predicted molecular weight: ~56kDa but routinely observed at ~50kDa.



IHC staining of FFPE human cerebellum with ALDH9A1 antibody at 3.8ug/ml. HIER: steamed with pH6 citrate buffer, AP-staining.

## Description

Additional name(s) for this target protein: Aldehyde dehydrogenase 9 family, member A1

## Application Notes

Optimal dilution of the ALDH9A1 antibody should be determined by the researcher.

## Immunogen

Amino acids QKEILDKFTEEVVKQ were used as the immunogen for this ALDH9A1 antibody.

## Storage

Aliquot and store the ALDH9A1 antibody at -20oC.