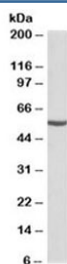


## ALDH6A1 Antibody (R35987)

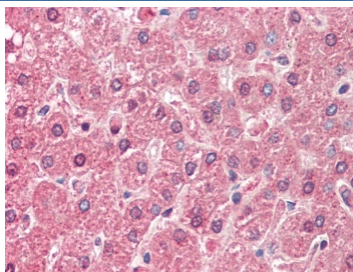
Catalog No.	Formulation	Size
R35987-100UG	0.5 mg/ml in 1X TBS, pH7.3, with 0.5% BSA (US sourced) and 0.02% sodium azide	100 ug

[Bulk quote request](#)

Availability	1-3 business days
Species Reactivity	Human, Mouse
Predicted Reactivity	Rat, Dog, Pig, Cow
Format	Antigen affinity purified
Host	Goat
Clonality	Polyclonal (goat origin)
Isotype	Goat Ig
Purity	Antigen affinity
Gene ID	4329
Localization	Cytoplasmic
Applications	Western Blot : 0.1-0.3ug/ml IHC (FFPE) : 5ug/ml ELISA (peptide) LOD : 1:32000
Limitations	This ALDH6A1 antibody is available for research use only.



Western blot testing of mouse kidney lysate with ALDH6A1 antibody at 0.1ug/ml.  
Predicted molecular weight: ~58 kDa.



IHC testing of FFPE human liver tissue with ALDH6A1 antibody at 5ug/ml. Required HIER: steamed antigen retrieval with pH6 citrate buffer; AP-staining.

## Description

Additional name(s) for this target protein: Aldehyde dehydrogenase 6 family, member A1

## Application Notes

Optimal dilution of the ALDH6A1 antibody should be determined by the researcher.

## Immunogen

Amino acids SNKAGEYIFER were used as the immunogen for this ALDH6A1 antibody.

## Storage

Aliquot and store the ALDH6A1 antibody at -20oC.