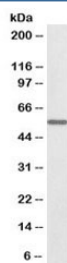


ALDH6A1 Antibody Biotin Conjugate (R36058BTN)

Catalog No.	Formulation	Size
R36058BTN	0.5 mg/ml in 1X TBS, pH7.3, with 0.5% BSA (US sourced) and 0.02% sodium azide	100 ug

[Bulk quote request](#)

Availability	1-3 business days
Species Reactivity	Human, Mouse, Rat
Predicted Reactivity	Cow, Dog, Pig
Format	Biotin Conjugate
Clonality	Polyclonal (goat origin)
Isotype	Goat Ig
Purity	Antigen affinity
Gene ID	4329
Applications	Western Blot : 0.1-0.3ug/ml Immunohistochemistry (FFPE) : suitable ELISA (peptide) LOD : 1:32000
Limitations	This ALDH6A1 antibody is available for research use only.



Western blot testing of mouse kidney lysate with biotinylated ALDH6A1 antibody at 0.1ug/ml. Predicted molecular weight: ~58 kDa.

Description

Additional name(s) for this target protein: Aldehyde dehydrogenase 6 family, member A1

Application Notes

Optimal dilution of the ALDH6A1 antibody should be determined by the researcher.

Immunogen

Amino acids SRSSFRGDTN were used as the immunogen for this ALDH6A1 antibody.

Storage

Aliquot and store the ALDH6A1 antibody at -20oC.