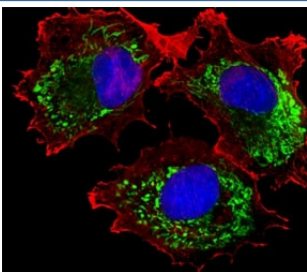


ALDH6A1 Antibody [clone 147CT8.3.4] (F40222)

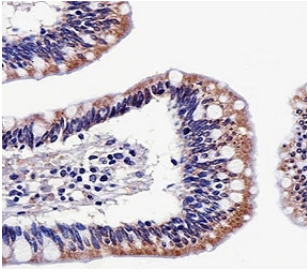
Catalog No.	Formulation	Size
F40222-0.4ML	In 1X PBS, pH 7.4, with 0.09% sodium azide	0.4 ml
F40222-0.08ML	In 1X PBS, pH 7.4, with 0.09% sodium azide	0.08 ml

[Bulk quote request](#)

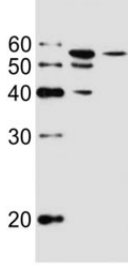
Availability	1-3 business days
Species Reactivity	Human
Format	Purified
Host	Mouse
Clonality	Monoclonal (mouse origin)
Isotype	Mouse IgG1, k
Clone Name	147CT8.3.4
Purity	Purified
UniProt	Q02252
Applications	Immunofluorescence : 1:25 IHC (Paraffin) : 1:25 Western Blot : 1:1000
Limitations	This ALDH6A1 antibody is available for research use only.



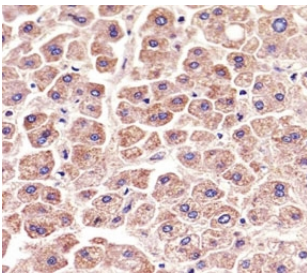
Fluorescent image of MCF-7 cells stained with ALDH6A1 antibody; Ab was diluted at 1:25 dilution. An Alexa Fluor 488 secondary Ab (green); DAPI counterstain (blue). Cytoplasmic actin was counterstained with Alexa Fluor 555 conjugated with Phalloidin (red).



Immunohistochemical analysis of paraffin-embedded human colon section using ALDH6A1 antibody at 1:25 dilution.



Western blot analysis of lysate from MCF-7, T47D cell line (left to right) using ALDH6A1 antibody at 1:1000 for each lane. Predicted molecular weight: ~58kDa.



Immunohistochemical analysis of paraffin-embedded human liver section using ALDH6A1 antibody at 1:25 dilution.

Description

This protein belongs to the aldehyde dehydrogenases family of proteins. This enzyme plays a role in the valine and pyrimidine catabolic pathways. The product of this gene, a mitochondrial methylmalonate semialdehyde dehydrogenase, catalyzes the irreversible oxidative decarboxylation of malonate and methylmalonate semialdehydes to acetyl- and propionyl-CoA. Methylmalonate semialdehyde dehydrogenase deficiency is characterized by elevated beta-alanine, 3-hydroxypropionic acid, and both isomers of 3-amino and 3-hydroxyisobutyric acids in urine organic acids.

Application Notes

Titration of the ALDH6A1 antibody may be required due to differences in protocols and secondary/substrate sensitivity.

Immunogen

This ALDH6A1 antibody was produced from a mouse immunized with ALDH6A1 recombinant protein.

Storage

Aliquot the ALDH6A1 antibody and store frozen at -20°C or colder. Avoid repeated freeze-thaw cycles.

