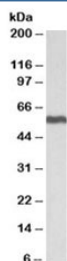


ALDH5A1 Antibody (R36020)

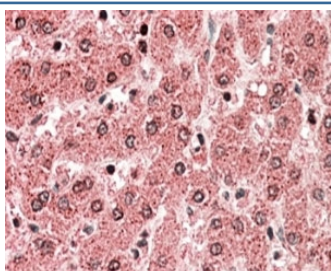
Catalog No.	Formulation	Size
R36020-100UG	0.5 mg/ml in 1X TBS, pH7.3, with 0.5% BSA (US sourced) and 0.02% sodium azide	100 ug

[Bulk quote request](#)

Availability	1-3 business days
Species Reactivity	Human, Mouse, Rat
Predicted Reactivity	Cow, Dog
Format	Antigen affinity purified
Clonality	Polyclonal (goat origin)
Isotype	Goat Ig
Purity	Antigen affinity
Gene ID	7915
Applications	Western Blot : 0.3-1ug/ml Immunohistochemistry (FFPE) : 5-10ug/ml ELISA (peptide) LOD : 1:32000
Limitations	This ALDH5A1 antibody is available for research use only.



Western blot testing of human liver lysate with ALDH5A1 antibody at 0.5ug/ml. Predicted molecular weight: ~59kDa, observed in mouse/rat at 50-55kDa.



IHC staining of FFPE human liver with ALDH5A1 antibody at 5ug/ml. HIER: steamed with pH6 citrate buffer, AP-staining.

Description

Additional name(s) for this target protein: Aldehyde dehydrogenase 5 family, member A1

Application Notes

Optimal dilution of the ALDH5A1 antibody should be determined by the researcher.

Immunogen

Amino acids SQDPAQIWRVAE were used as the immunogen for this ALDH5A1 antibody.

Storage

Aliquot and store the ALDH5A1 antibody at -20oC.