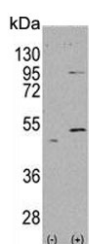


## ALDH5A1 Antibody (F54698)

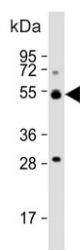
Catalog No.	Formulation	Size
F54698-0.4ML	In 1X PBS, pH 7.4, with 0.09% sodium azide	0.4 ml
F54698-0.08ML	In 1X PBS, pH 7.4, with 0.09% sodium azide	0.08 ml

[Bulk quote request](#)

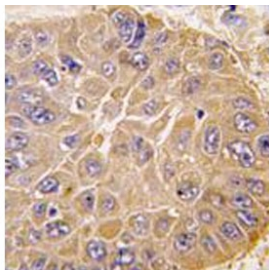
<b>Availability</b>	1-3 business days
<b>Species Reactivity</b>	Human
<b>Format</b>	Purified
<b>Clonality</b>	Polyclonal (rabbit origin)
<b>Isotype</b>	Rabbit Ig
<b>Purity</b>	Antigen affinity purified
<b>UniProt</b>	P51649
<b>Localization</b>	Cytoplasmic
<b>Applications</b>	Immunohistochemistry (FFPE) : 1:25 Western Blot : 1:500-1:2000
<b>Limitations</b>	This ALDH5A1 antibody is available for research use only.



Western blot testing of 1) non-transfected and 2) transfected 293 cell lysate with ALDH5A1 antibody. Predicted molecular weight ~57 kDa.



Western blot testing of human liver lysate with ALDH5A1 antibody. Predicted molecular weight ~57 kDa.



IHC testing of FFPE human hepatocarcinoma tissue with ALDH5A1 antibody. HIER: steam section in pH6 citrate buffer for 20 min and allow to cool prior to staining.

## Description

ALDH5A1 belongs to the aldehyde dehydrogenase family of proteins. This protein functions as a mitochondrial NAD(+)-dependent succinic semialdehyde dehydrogenase. A deficiency of this enzyme, known as 4-hydroxybutyricaciduria, is a rare inborn error in the metabolism of the neurotransmitter 4-aminobutyric acid (GABA). In response to the defect, physiologic fluids from patients accumulate GHB, a compound with numerous neuromodulatory properties.

## Application Notes

The stated application concentrations are suggested starting points. Titration of the ALDH5A1 antibody may be required due to differences in protocols and secondary/substrate sensitivity.

## Immunogen

A portion of amino acids 128-157 from the human protein was used as the immunogen for the ALDH5A1 antibody.

## Storage

Aliquot the ALDH5A1 antibody and store frozen at -20oC or colder. Avoid repeated freeze-thaw cycles.