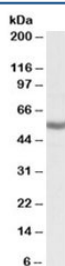


ALDH3B1 Antibody (R35220)

Catalog No.	Formulation	Size
R35220-100UG	0.5 mg/ml in 1X TBS, pH7.3, with 0.5% BSA (US sourced) and 0.02% sodium azide	100 ug

[Bulk quote request](#)

Availability	1-3 business days
Species Reactivity	Human
Predicted Reactivity	Cow, Dog, Mouse, Rat
Format	Antigen affinity purified
Clonality	Polyclonal (goat origin)
Isotype	Goat Ig
Purity	Antigen affinity
Gene ID	221
Applications	Western Blot : 0.3-1ug/ml ELISA (peptide) LOD : 1:16000
Limitations	This ALDH3B1 antibody is available for research use only.



Western blot testing of K562 lysate with ALDH3B1 antibody at 0.3ug/ml. Predicted molecular weight: ~52kDa.

Description

Additional name(s) for this target protein: Aldehyde dehydrogenase 3 family, member B1

Application Notes

Optimal dilution of the ALDH3B1 antibody should be determined by the researcher.

Immunogen

Amino acids QDLHKSAFESEVSE were used as the immunogen for this ALDH3B1 antibody.

Storage

Aliquot and store the ALDH3B1 antibody at -20oC.