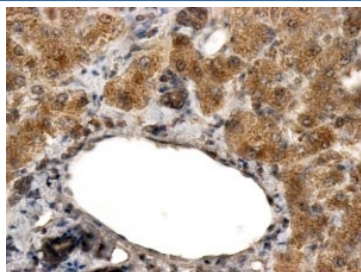


ALDH3A2 Antibody (R35963)

Catalog No.	Formulation	Size
R35963-100UG	0.5 mg/ml in 1X TBS, pH7.3, with 0.5% BSA (US sourced) and 0.02% sodium azide	100 ug

[Bulk quote request](#)

Availability	1-3 business days
Species Reactivity	Human
Predicted Reactivity	Cow, Dog
Format	Antigen affinity purified
Host	Goat
Clonality	Polyclonal (goat origin)
Isotype	Goat Ig
Purity	Antigen affinity
Gene ID	224
Applications	Immunohistochemistry (FFPE) : 2-4ug/ml ELISA (peptide) LOD : 1:32000
Limitations	This ALDH3A2 antibody is available for research use only.



IHC testing of FFPE human liver with ALDH3A2 antibody at 2ug/ml. HIER: steamed with pH6 citrate buffer, HRP-staining.

Description

Additional name(s) for this target protein: Aldehyde dehydrogenase 3 family, member A2

Application Notes

Optimal dilution of the ALDH3A2 antibody should be determined by the researcher.

Immunogen

Amino acids SLKREGANKLRYPP were used as the immunogen for this ALDH3A2 antibody.

Storage

Aliquot and store the ALDH3A2 antibody at -20oC.