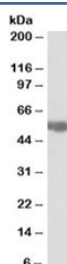


## Aldh3a2 Antibody (R34448)

| Catalog No.  | Formulation   | Size   |
|--------------|---|--------|
| R34448-100UG | 0.5 mg/ml in 1X TBS, pH7.3, with 0.5% BSA (US sourced) and 0.02% sodium azide | 100 ug |

[Bulk quote request](#)

|                    |   |
|--------------------|---|
| Availability       | 1-3 business days   |
| Species Reactivity | Mouse, Rat  |
| Format             | Antigen affinity purified                                     |
| Clonality          | Polyclonal (goat origin)                                      |
| Isotype            | Goat Ig   |
| Purity             | Antigen affinity  |
| Gene ID            | 11671   |
| Applications       | Western Blot : 0.03-0.1ug/ml<br>ELISA (peptide) LOD : 1:32000 |
| Limitations        | This Aldh3a2 antibody is available for research use only.     |



Western blot testing of rat liver lysate with Aldh3a2 antibody at 0.03ug/ml. Predicted molecular weight: ~54kDa.

## Description

Additional name(s) for this target protein: Aldehyde dehydrogenase 3 family, member A2

## Application Notes

Optimal dilution of the Aldh3a2 antibody should be determined by the researcher.

## Immunogen

Amino acids KGLKGESVNLRY were used as the immunogen for this Aldh3a2 antibody.

## Storage

Aliquot and store the Aldh3a2 antibody at -20oC.