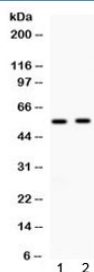


ALDH3A2 Antibody (R32467)

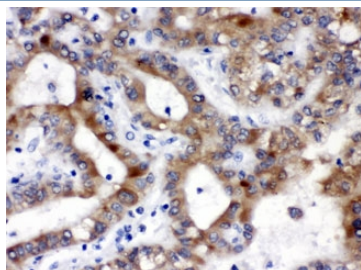
Catalog No.	Formulation	Size
R32467	0.5mg/ml if reconstituted with 0.2ml sterile DI water	100 ug

Bulk quote request

Availability	1-3 business days
Species Reactivity	Human, Rat
Format	Antigen affinity purified
Host	Rabbit
Clonality	Polyclonal (rabbit origin)
Isotype	Rabbit IgG
Purity	Antigen affinity
Buffer	Lyophilized from 1X PBS with 2.5% BSA and 0.025% sodium azide
UniProt	P51648
Localization	Cytoplasmic
Applications	Western Blot : 0.5-1ug/ml IHC (FFPE) : 1-2ug/ml
Limitations	This ALDH3A2 antibody is available for research use only.



Western blot testing of 1) rat liver and 2) human 22RV1 lysate with ALDH3A2 antibody at 0.5ug/ml. Predicted molecular weight: ~54kDa.



IHC testing of FFPE human liver cancer tissue with ALDH3A2 antibody at 1ug/ml. HIER: steam in pH6 citrate buffer and allow to cool prior to staining.

Description

Fatty aldehyde dehydrogenase (or Long-chain-aldehyde dehydrogenase) is an aldehyde dehydrogenase enzyme that in human is encoded in the ALDH3A2 gene on chromosome 17. ALDH3A2 catalyzes the oxidation of long-chain aliphatic aldehydes into fatty acids. It is known to act on a variety of both saturated and unsaturated aliphatic aldehydes between 6 to 24 carbons in length, as well as dihydrophytal, a 20-carbon branched chain aldehyde. It requires NAD⁺ as a co-factor. The encoded enzyme is responsible for conversion of the sphingosine 1-phosphate (S1P) degradation product hexadecenal to hexadecenoic acid. ALDH3A2 is expressed in the human liver and has been found to localize the microsome fraction inside the cell.

Application Notes

Optimal dilution of the ALDH3A2 antibody should be determined by the researcher.

Immunogen

Amino acids M1-Q100 were used as the immunogen for the ALDH3A2 antibody.

Storage

Prior to reconstitution, store at 4°C. After reconstitution, the ALDH3A2 antibody can be stored for up to one month at 4°C. For long-term, aliquot and store at -20°C. Avoid repeated freezing and thawing.