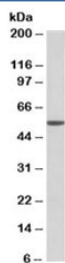


ALDH3A1 Antibody / ALDH3 / Aldehyde dehydrogenase 3 (R35824)

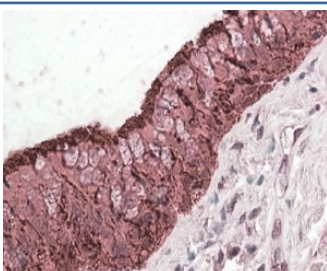
Catalog No.	Formulation	Size
R35824-100UG	0.5 mg/ml in 1X TBS, pH7.3, with 0.5% BSA (US sourced) and 0.02% sodium azide	100 ug

[Bulk quote request](#)

Availability	1-3 business days
Species Reactivity	Human, Mouse
Format	Antigen affinity purified
Host	Goat
Clonality	Polyclonal (goat origin)
Isotype	Goat Ig
Purity	Antigen affinity
Gene ID	218
Applications	Western Blot : 0.01-0.03ug/ml Immunohistochemistry (FFPE) : 3-5ug/ml ELISA (peptide) LOD : 1:32000
Limitations	This ALDH3A1 antibody is available for research use only.



Western blot testing of mouse eye lysate with ALDH3A1 antibody at 0.01ug/ml.
Predicted molecular weight: ~51kDa.



IHC staining of FFPE human lung with ALDH3A1 antibody at 4ug/ml. HIER: steamed with pH6 citrate buffer, AP-staining.

Description

Additional name(s) for this target protein: Aldehyde dehydrogenase 3 family, member A1; Aldehyde dehydrogenase, dimeric NADP-preferring

Application Notes

Optimal dilution of the ALDH3A1 antibody should be determined by the researcher.

Immunogen

Amino acids RYPPSPAKMTQH were used as the immunogen for this ALDH3A1 antibody.

Storage

Aliquot and store the ALDH3A1 antibody at -20°C.