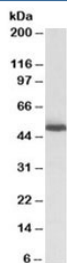


ALDH2 Antibody (R33431)

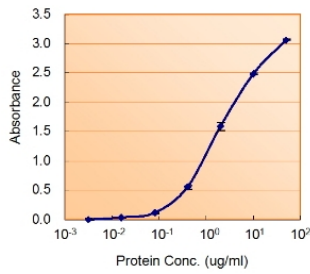
Catalog No.	Formulation	Size
R33431-100UG	0.5 mg/ml in 1X TBS, pH7.3, with 0.5% BSA (US sourced) and 0.02% sodium azide	100 ug

[Bulk quote request](#)

Availability	1-3 business days
Species Reactivity	Human, Mouse, Rat
Predicted Reactivity	Dog, Pig, Cow
Format	Antigen affinity purified
Host	Goat
Clonality	Polyclonal (goat origin)
Isotype	Goat Ig
Purity	Antigen affinity
Gene ID	217
Applications	Western Blot : 0.03-0.1ug/ml Enzyme ImmunoAssay : binds recombinant protein (use at 1-2ug/ml) ELISA (peptide) LOD : 1:8000
Limitations	This ALDH2 antibody is available for research use only.



Western blot testing of mouse liver lysate with ALDH2 antibody at 0.03ug/ml. Predicted molecular weight: ~56kDa.



Sandwich ELISA with the ALDH2 antibody used as detect at 1.5ug/ml.

Description

Additional name(s) for this target protein: Aldehyde dehydrogenase 2

Explore our [ALDH2 Antibody / Mitochondrial Detoxification Enzyme Antibody](#) page for additional information on this key regulator of aldehyde metabolism, mitochondrial function, and oxidative stress protection.

Application Notes

Optimal dilution of the ALDH2 antibody should be determined by the researcher.

Immunogen

Amino acids DETQFKKILGYIN were used as the immunogen for this ALDH2 antibody.

Storage

Aliquot and store the ALDH2 antibody at -20oC.