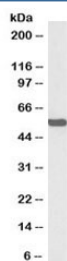


## ALDH2 Antibody Biotin Conjugate (R33431BTN)

Catalog No.	Formulation	Size
R33431BTN	0.5 mg/ml in 1X TBS, pH7.3, with 0.5% BSA (US sourced) and 0.02% sodium azide	100 ug

[Bulk quote request](#)

Availability	1-3 business days
Species Reactivity	Human, Mouse, Rat
Predicted Reactivity	Cow, Dog, Pig
Format	Biotin Conjugate
Clonality	Polyclonal (goat origin)
Isotype	Goat Ig
Purity	Antigen affinity
Gene ID	217
Applications	Western Blot : 0.3-1ug/ml Enzyme ImmunoAssay : suitable ELISA (peptide) LOD : 1:8000
Limitations	This ALDH2 antibody is available for research use only.



Western blot testing of mouse liver lysate with biotinylated ALDH2 antibody at 0.3ug/ml.  
Predicted molecular weight: ~56kDa.

### Description

Additional name(s) for this target protein: Aldehyde dehydrogenase 2

### Application Notes

Optimal dilution of the ALDH2 antibody should be determined by the researcher.

## **Immunogen**

Amino acids DETQFKKILGYIN were used as the immunogen for this ALDH2 antibody.

## **Storage**

Aliquot and store the ALDH2 antibody at -20oC.