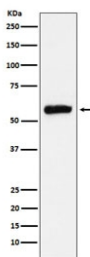


ALDH2 Antibody / Aldehyde dehydrogenase 2 [clone AFOI-1] (RQ5101)

Catalog No.	Formulation	Size
RQ5101	Antibody in PBS with 0.02% sodium azide, 50% glycerol and 0.4-0.5mg/ml BSA	100 ul

[Bulk quote request](#)

Availability	1-2 weeks
Species Reactivity	Human
Format	Purified
Host	Rabbit
Clonality	Rabbit Monoclonal
Isotype	Rabbit IgG
Clone Name	AFOI-1
Purity	Affinity purified
UniProt	P05091
Applications	Western Blot : 1:500-1:2000
Limitations	This ALDH2 antibody is available for research use only.



Western blot testing of human HepG2 cell lysate with ALDH2 antibody. Predicted molecular weight ~56 kDa.

Description

This protein belongs to the aldehyde dehydrogenase family of proteins. Aldehyde dehydrogenase is the second enzyme of the major oxidative pathway of alcohol metabolism. Two major liver isoforms of aldehyde dehydrogenase, cytosolic and mitochondrial, can be distinguished by their electrophoretic mobilities, kinetic properties, and subcellular localizations. Most Caucasians have two major isozymes, while approximately 50% of East Asians have the cytosolic isozyme but not the mitochondrial isozyme. A remarkably higher frequency of acute alcohol intoxication among East Asians than among Caucasians could be related to the absence of a catalytically active form of the mitochondrial isozyme. The increased

exposure to acetaldehyde in individuals with the catalytically inactive form may also confer greater susceptibility to many types of cancer. This gene encodes a mitochondrial isoform, which has a low K_m for acetaldehydes, and is localized in mitochondrial matrix. Alternative splicing results in multiple transcript variants encoding distinct isoforms. [RefSeq]

Application Notes

Optimal dilution of the ALDH2 antibody should be determined by the researcher.

Immunogen

A synthetic peptide specific to human ALDH2 was used as the immunogen for the ALDH2 antibody.

Storage

Store the ALDH2 antibody at -20°C.