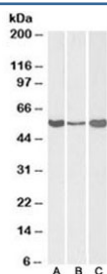


ALDH1A1 Antibody (R34035)

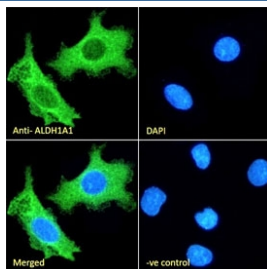
Catalog No.	Formulation	Size
R34035-100UG	0.5 mg/ml in 1X TBS, pH7.3, with 0.5% BSA (US sourced) and 0.02% sodium azide	100 ug

[Bulk quote request](#)

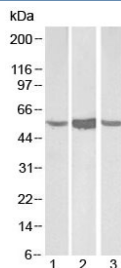
Availability	1-3 business days
Species Reactivity	Human, Mouse, Rat
Predicted Reactivity	Dog, Cow
Format	Antigen affinity purified
Host	Goat
Clonality	Polyclonal (goat origin)
Isotype	Goat Ig
Purity	Antigen affinity
Gene ID	216
Applications	Western Blot : 0.1-0.3ug/ml Immunofluorescence : 10ug/ml ELISA (peptide) LOD : 1:1000
Limitations	This ALDH1A1 antibody is available for research use only.



Western blot testing of human [A] and mouse [B] liver, and rat [C] testis lysate with ALDH1A1 antibody at 0.3ug/ml. Predicted molecular weight ~55 kDa.



IF/ICC staining of fixed and permeabilized human HepG2 cells with ALDH1A1 antibody (green) at 10ug/ml and DAPI nuclear stain (blue).



Western blot testing of lysate from 1) human, 2) mouse and 3) rat liver with ALDH1A1 antibody at 0.1ug/ml. Predicted molecular weight ~55 kDa.

Description

Additional name(s) for this target protein: Aldehyde dehydrogenase 1 family, member A1; ALDH1

Application Notes

Optimal dilution of the ALDH1A1 antibody should be determined by the researcher.

1. This ALDH1A1 antibody may cross-react with ALDH1A2 and ALDH2.

Immunogen

Amino acids EVKTVTVKISQKNS were used as the immunogen for this ALDH1A1 antibody.

Storage

Aliquot and store the ALDH1A1 antibody at -20oC.