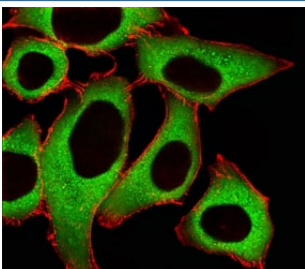


ALDH1A1 Antibody (F52503)

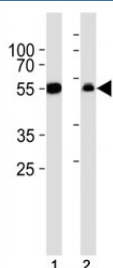
Catalog No.	Formulation	Size
F52503-0.4ML	In 1X PBS, pH 7.4, with 0.09% sodium azide	0.4 ml
F52503-0.08ML	In 1X PBS, pH 7.4, with 0.09% sodium azide	0.08 ml

[Bulk quote request](#)

Availability	1-3 business days
Species Reactivity	Human, Rat
Predicted Reactivity	Primate
Format	Antigen affinity purified
Host	Rabbit
Clonality	Polyclonal (rabbit origin)
Isotype	Rabbit Ig
Purity	Antigen affinity
UniProt	P00352
Applications	Immunofluorescence : 1:25 Western Blot : 1:1000
Limitations	This ALDH1A1 antibody is available for research use only.



Fluorescent image of A549 cells stained with ALDH1A1 antibody at 1:25. An Alexa Fluor 488-conjugated goat anti-rabbit IgG was used as the secondary Ab (green). Cytoplasmic actin was counterstained with Alexa Fluor 555 conjugated with Phalloidin (red).



Western blot analysis of lysate from (1) A549 cell line and (2) rat liver tissue lysate using ALDH1A1 antibody diluted at 1:1000.

Description

Binds free retinal and cellular retinol-binding protein- bound retinal. Can convert/oxidize retinaldehyde to retinoic acid (By similarity). [UniProt]

For broader multi-application ALDH1A1 detection including IF and flow cytometry workflows, see our [ALDH1A1 Antibody / Cancer Stem Cell and Retinoic Acid Metabolism Marker](#) page.

Application Notes

Titration of the ALDH1A1 antibody may be required due to differences in protocols and secondary/substrate sensitivity.

Immunogen

This ALDH1A1 antibody was produced from a rabbit immunized with a KLH conjugated synthetic peptide between 306-339 amino acids from the Central region of human ALDH1A1.

Storage

Aliquot the ALDH1A1 antibody and store frozen at -20oC or colder. Avoid repeated freeze-thaw cycles.