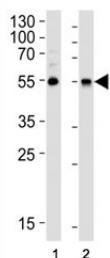


ALDH1A1 Antibody (F44050)

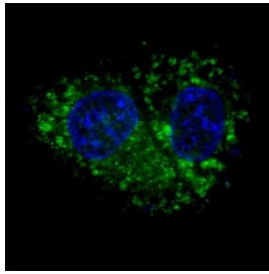
Catalog No.	Formulation	Size
F44050-0.4ML	In 1X PBS, pH 7.4, with 0.09% sodium azide	0.4 ml
F44050-0.08ML	In 1X PBS, pH 7.4, with 0.09% sodium azide	0.08 ml

[Bulk quote request](#)

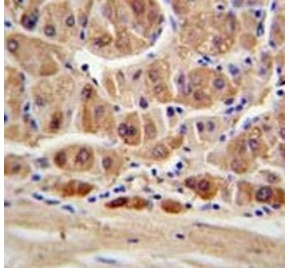
Availability	1-3 business days
Species Reactivity	Human
Format	Antigen affinity purified
Host	Rabbit
Clonality	Polyclonal (rabbit origin)
Isotype	Rabbit Ig
Purity	Antigen affinity
UniProt	P00352
Applications	Western Blot : 1:1000 Immunofluorescence : 1:100 IHC (Paraffin) : 1:50-1:100 Flow Cytometry : 1:10-1:50
Limitations	This ALDH1A1 antibody is available for research use only.



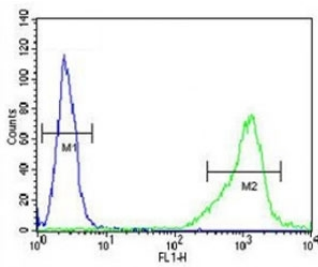
Western blot analysis of lysate from (1) HepG2 cell line and (2) human lung tissue lysate using ALDH1A1 antibody diluted at 1:1000.



Fluorescent confocal image of HepG2 cells stained with ALDH1A1 antibody at 1:100. ALDH1A1 immunoreactivity is localized to the cytoplasm of HepG2 cells.



ALDH1A1 antibody IHC analysis in formalin fixed and paraffin embedded human hepatocarcinoma.



ALDH1A1 antibody flow cytometric analysis of NCI-H460 cells (green) compared to a [negative control](#) (blue). FITC-conjugated goat-anti-rabbit secondary Ab was used for the analysis.

Description

ALDH1A1 belongs to the aldehyde dehydrogenases family of proteins. Aldehyde dehydrogenase is the second enzyme of the major oxidative pathway of alcohol metabolism. Two major liver isoforms of this enzyme, cytosolic and mitochondrial, can be distinguished by their electrophoretic mobilities, kinetic properties, and subcellular localizations. Most Caucasians have two major isozymes, while approximately 50% of Orientals have only the cytosolic isozyme, missing the mitochondrial isozyme. A remarkably higher frequency of acute alcohol intoxication among Orientals than among Caucasians could be related to the absence of the mitochondrial isozyme.

For broader multi-application ALDH1A1 detection including IF and flow cytometry workflows, see our [ALDH1A1 Antibody / Cancer Stem Cell and Retinoic Acid Metabolism Marker](#) page.

Application Notes

Titration of the ALDH1A1 antibody may be required due to differences in protocols and secondary/substrate sensitivity.

Immunogen

This ALDH1A1 antibody was produced from rabbits immunized with human ALDH1A1 recombinant protein.

Storage

Aliquot the ALDH1A1 antibody and store frozen at -20°C or colder. Avoid repeated freeze-thaw cycles.

