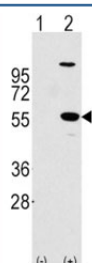


## ALDH1A1 Antibody (F44049)

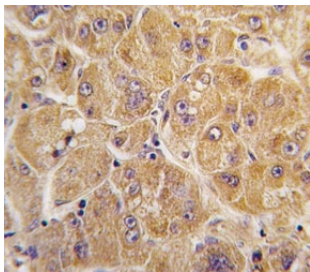
Catalog No.	Formulation	Size
F44049-0.4ML	In 1X PBS, pH 7.4, with 0.09% sodium azide	0.4 ml
F44049-0.08ML	In 1X PBS, pH 7.4, with 0.09% sodium azide	0.08 ml

[Bulk quote request](#)

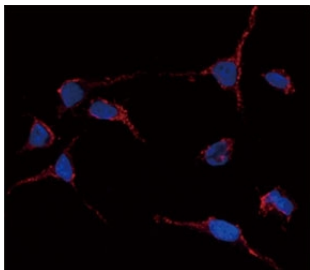
<b>Availability</b>	1-3 business days
<b>Species Reactivity</b>	Human
<b>Predicted Reactivity</b>	Mouse, Primate
<b>Format</b>	Purified
<b>Clonality</b>	Polyclonal (rabbit origin)
<b>Isotype</b>	Rabbit Ig
<b>Purity</b>	Purified
<b>UniProt</b>	P00352
<b>Applications</b>	Western Blot : 1:1000 IHC (Paraffin) : 1:10-1:50 Immunofluorescence : 1:10-1:50 Flow Cytometry : 1:10-1:50
<b>Limitations</b>	This ALDH1A1 antibody is available for research use only.



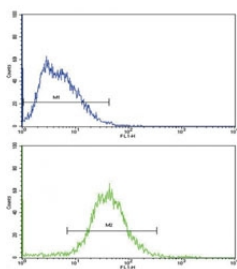
Western blot analysis of ALDH1A1 antibody and 293 cell lysate (2 ug/lane) either nontransfected (Lane 1) or transiently transfected with the ALDH1A1 gene (2).



IHC analysis of FFPE human hepatocarcinoma tissue stained with ALDH1A1 antibody



Immunofluorescence analysis of anti-ALDH1A1 antibody and HeLa cells. Primary Ab was followed by Alexa-Fluor-546-conjugated donkey anti-rabbit IgG (H+L). Alexa-Fluor-546 emits orange fluorescence. Blue counterstaining is DAPI.



Flow cytometric analysis of HepG2 cells using ALDH1A1 antibody (green) compared to a [negative control](http://www.ncbi.nlm.nih.gov/pmc/articles/PMC1001001/) (blue). FITC-conjugated goat-anti-rabbit secondary Ab was used for the analysis.

## Description

ALDH1A1 binds free retinal and cellular retinol-binding protein- bound retinal. Can convert/oxidize retinaldehyde to retinoic acid (By similarity). [UniProt]

## Application Notes

Titration of the ALDH1A1 antibody may be required due to differences in protocols and secondary/substrate sensitivity.

## Immunogen

A portion of amino acids 302-331 from the human protein was used as the immunogen for this ALDH1A1 antibody.

## Storage

Aliquot the ALDH1A1 antibody and store frozen at -20oC or colder. Avoid repeated freeze-thaw cycles.