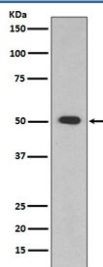


ALDH1A1 Antibody [clone AHA-1] (RQ4832)

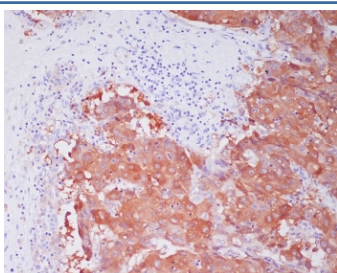
Catalog No.	Formulation	Size
RQ4832	Antibody in PBS with 0.02% sodium azide, 50% glycerol and 0.4-0.5mg/ml BSA	100 ul

[Bulk quote request](#)

Availability	1-2 weeks
Species Reactivity	Human
Format	Purified
Host	Rabbit
Clonality	Rabbit Monoclonal
Isotype	Rabbit IgG
Clone Name	AHA-1
Purity	Affinity purified
UniProt	P00352
Applications	Western Blot : 1:500-1:2000 Immunohistochemistry (FFPE) : 1:50-1:200
Limitations	This ALDH1A1 antibody is available for research use only.



Western blot testing of human HepG2 cell lysate with ALDH1A1 antibody. Predicted molecular weight ~55 kDa.



IHC staining of FFPE human liver cancer with ALDH1A1 antibody. HIER: boil tissue sections in pH6, 10mM citrate buffer, for 10-20 min and allow to cool before testing.

Description

The protein encoded by this gene belongs to the aldehyde dehydrogenase family. Aldehyde dehydrogenase is the next enzyme after alcohol dehydrogenase in the major pathway of alcohol metabolism. There are two major aldehyde dehydrogenase isozymes in the liver, cytosolic and mitochondrial, which are encoded by distinct genes, and can be distinguished by their electrophoretic mobility, kinetic properties, and subcellular localization. This gene encodes the cytosolic isozyme. Studies in mice show that through its role in retinol metabolism, this gene may also be involved in the regulation of the metabolic responses to high-fat diet. [RefSeq]

Application Notes

Optimal dilution of the ALDH1A1 antibody should be determined by the researcher.

Immunogen

A synthetic peptide specific to human ALDH1A1 was used as the immunogen for the ALDH1A1 antibody.

Storage

Store the ALDH1A1 antibody at -20oC.