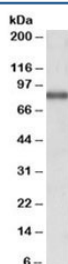


ALDH18A1 Antibody (R35872)

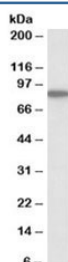
Catalog No.	Formulation	Size
R35872-100UG	0.5 mg/ml in 1X TBS, pH7.3, with 0.5% BSA (US sourced) and 0.02% sodium azide	100 ug

[Bulk quote request](#)

Availability	1-3 business days
Species Reactivity	Human, Mouse
Predicted Reactivity	Cow, Dog, Pig, Rat
Format	Antigen affinity purified
Clonality	Polyclonal (goat origin)
Isotype	Goat Ig
Purity	Antigen affinity
Gene ID	5832
Applications	Western Blot : 1-3ug/ml ELISA (peptide) LOD : 1:8000
Limitations	This ALDH18A1 antibody is available for research use only.



Western blot testing of MCF7 lysate with ALDH18A1 antibody at 1ug/ml.
Predicted/observed molecular weight: 85kDa.



Western blot testing of NIH3T3 lysate with ALDH18A1 antibody at 0.3ug/ml.
Predicted/observed molecular weight: 85kDa.

Description

Additional name(s) for this target protein: Aldehyde dehydrogenase 18 family, member A1

Application Notes

Optimal dilution of the ALDH18A1 antibody should be determined by the researcher.

Immunogen

Amino acids SEHGSLKYLH were used as the immunogen for this ALDH18A1 antibody.

Storage

Aliquot and store the ALDH18A1 antibody at -20oC.