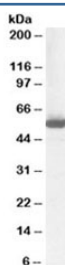


ALDH1 Antibody (R35594)

Catalog No.	Formulation	Size
R35594-100UG	0.5 mg/ml in 1X TBS, pH7.3, with 0.5% BSA (US sourced) and 0.02% sodium azide	100 ug

[Bulk quote request](#)

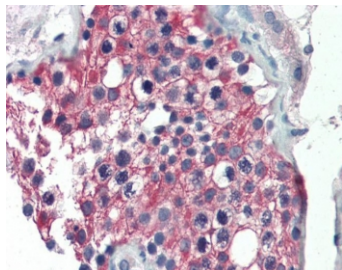
Availability	1-3 business days
Species Reactivity	Human
Predicted Reactivity	Mouse, Rat
Format	Antigen affinity purified
Host	Goat
Clonality	Polyclonal (goat origin)
Isotype	Goat Ig
Purity	Antigen affinity
UniProt	P00352
Gene ID	216
Localization	Cytoplasmic
Applications	Western Blot : 1-3ug/ml IHC (FFPE) : 5ug/ml ELISA (peptide) LOD : 1:32000
Limitations	This ALDH1 antibody is available for research use only.



Western blot testing of human liver lysate with ALDH1 antibody at 1ug/ml. Predicted molecular weight ~55 kDa.



Western blot of HEK293 lysate overexpressing ALDH1A1 probed with ALDH1 antibody (mock transfection in lane 1). Predicted molecular weight ~55 kDa.



IHC testing of FFPE human testis tissue with ALDH1 antibody at 5ug/ml. Required HIER: steamed antigen retrieval with pH6 citrate buffer; AP-staining.

Description

Additional name(s) for this target protein: Aldehyde dehydrogenase 1 family, member A1; ALDH1A1

Application Notes

Optimal dilution of the ALDH1 antibody should be determined by the researcher.

Immunogen

Amino acids RELGEYGFHEYTE were used as the immunogen for this ALDH1 antibody.

Storage

Aliquot and store the ALDH1 antibody at -20oC.