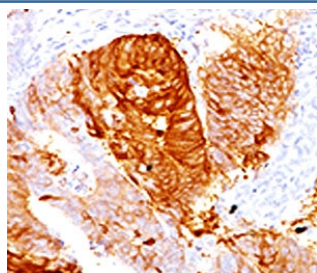


ALDH1 Antibody [clone AHDH1-1] (V7219)

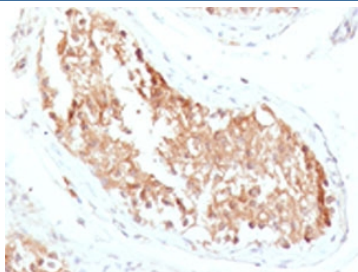
Catalog No.	Formulation	Size
V7219-100UG	0.2 mg/ml in 1X PBS with 0.1 mg/ml BSA (US sourced) and 0.05% sodium azide	100 ug
V7219-20UG	0.2 mg/ml in 1X PBS with 0.1 mg/ml BSA (US sourced) and 0.05% sodium azide	20 ug
V7219SAF-100UG	1 mg/ml in 1X PBS; BSA free, sodium azide free	100 ug

[Bulk quote request](#)

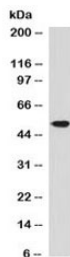
Availability	1-3 business days
Species Reactivity	Human
Format	Purified
Host	Mouse
Clonality	Monoclonal (mouse origin)
Isotype	Mouse IgG1, kappa
Clone Name	AHDH1-1
Purity	Protein G affinity chromatography
UniProt	P00352
Localization	Cytoplasmic
Applications	Western Blot : 1-2ug/ml Immunohistochemistry (FFPE) : 0.5-1ug/ml
Limitations	This ALDH1 antibody is available for research use only.



IHC testing of FFPE human colon carcinoma with ALDH1 antibody (clone AHDH1-1).



IHC testing of FFPE human testicular carcinoma with ALDH1 antibody (clone AHDH1-1).



Western blot testing of human K562 cell lysate with ALDH1 antibody (clone AHDH1-1).
Expected molecular weight ~55 kDa.

Description

ALDH1A1 belongs to the ALDH enzymes, a family of evolutionarily conserved enzymes comprised of 19 isoforms that are localized in the cytoplasm, mitochondria or nucleus. ALDH1 is predominantly expressed in the epithelium of testis, brain, eye, liver, kidney, as well as neural and hematopoietic stem cells. Reportedly, high ALDH1 expression is found in solitary fibrous tumor (SFT) and hemangiopericytoma (HPC), compared to meningiomas and synovial sarcomas. In combination with CD34, ALDH1 may be useful for the differentiation among SFT, HPC, meningioma, and synovial sarcoma.

Application Notes

Titration of the ALDH1 antibody may be required for optimal performance.

1. FFPE testing requires sections to be boiled in pH 9 10mM Tris with 1mM EDTA for 10-20 minutes, followed by cooling at RT for 20 minutes, prior to staining.

Immunogen

A human recombinant partial ALDH1A1 protein (AA 315-434) was used as the immunogen for this ALDH1 antibody.

Storage

The ALDH1 antibody (with azide) can be stored at 2-8°C. The azide-free format should be aliquoted and stored at -20°C or colder.