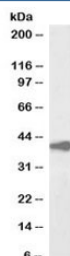


Alcohol dehydrogenase Antibody Biotin Conjugate (R36079BTN)

Catalog No.	Formulation	Size
R36079BTN	0.5 mg/ml in 1X TBS, pH7.3, with 0.5% BSA (US sourced) and 0.02% sodium azide	100 ug

[Bulk quote request](#)

Availability	1-3 business days
Species Reactivity	Human
Predicted Reactivity	Mouse, Rat
Format	Biotin Conjugate
Host	Goat
Clonality	Polyclonal (goat origin)
Isotype	Goat Ig
Purity	Antigen affinity
Gene ID	124
Applications	Western Blot : 1-3ug/ml Immunohistochemistry (FFPE) : suitable ELISA (peptide) LOD : 1:8000
Limitations	This Alcohol dehydrogenase antibody is available for research use only.



Western blot testing of human liver lysate with biotinylated Alcohol dehydrogenase antibody at 2ug/ml. Predicted molecular weight: ~40kDa.

Description

Additional name(s) for this target protein: Alcohol dehydrogenase 1A (ADH1A), alcohol dehydrogenase 1B (ADH1B), alcohol dehydrogenase 1C (ADH1C)

Application Notes

Optimal dilution of the Alcohol dehydrogenase antibody should be determined by the researcher.

1. This Alcohol dehydrogenase antibody will detect the alpha, beta and gamma isoforms of the protein.

Immunogen

Amino acids STAGKVMKCKA were used as the immunogen for this ADH1A/B/C antibody.

Storage

Aliquot and store the Alcohol dehydrogenase antibody at -20oC.