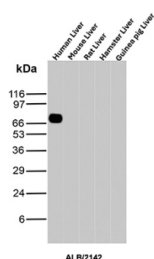


Albumin Antibody / Microarray Specificity Validated Serum Protein Antibody [clone ALB/2142] (V7554)

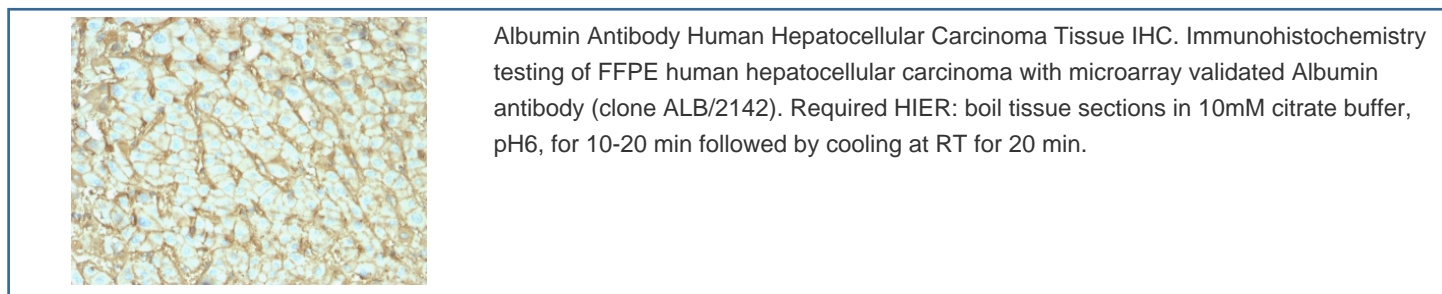
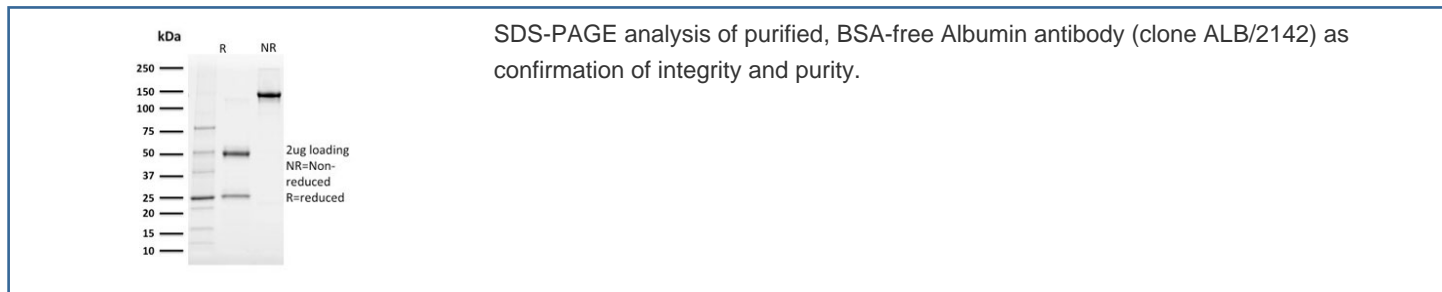
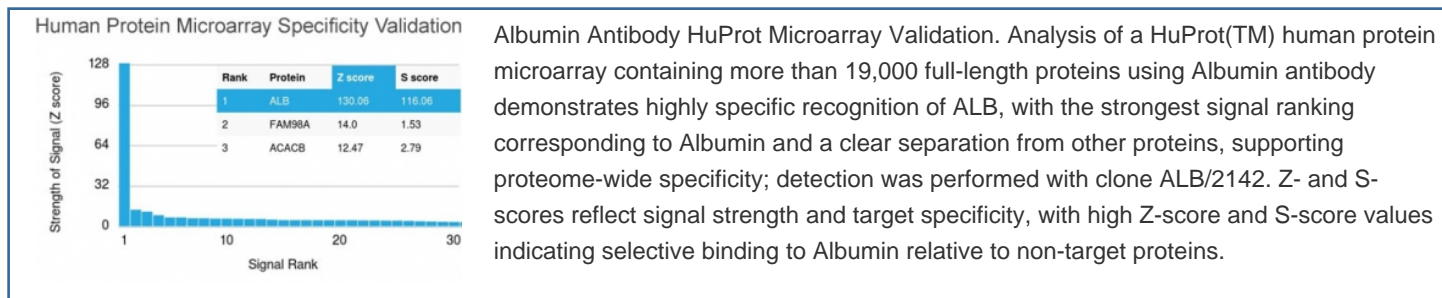
Catalog No.	Formulation	Size
V7554-100UG	0.2 mg/ml in 1X PBS with 0.05% sodium azide	100 ug
V7554-20UG	0.2 mg/ml in 1X PBS with 0.05% sodium azide	20 ug
V7554SAF-100UG	1 mg/ml in 1X PBS; sodium azide free	100 ug
V7554IHC-7ML	Prediluted in 1X PBS with 0.05% sodium azide; *For IHC use only*	7 ml

Bulk quote request

Availability	1-3 business days
Species Reactivity	Human
Format	Purified
Host	Mouse
Clonality	Monoclonal (mouse origin)
Isotype	Mouse IgG1, kappa
Clone Name	ALB/2142
Purity	Protein G affinity chromatography
UniProt	P02768
Localization	Cell surface, Cytoplasmic
Applications	ELISA (order BSA/sodium Azide-free Format For Coating) : Immunohistochemistry (FFPE) : 1-2ug/ml for 30 min at RT Western Blot : 2-4ug/ml
Limitations	This Albumin Antibody / Microarray Specificity Validated Serum Protein Antibody is available for research use only.



Albumin Antibody Multi-Species Liver WB. Western blot analysis of human, mouse, rat, hamster, and guinea pig liver tissue lysates using microarray validated Albumin antibody detects a strong band at approximately 65-70 kDa in human liver, consistent with the predicted molecular weight of Albumin (ALB), with minimal signal observed in other species under these conditions; detection was performed with clone ALB/2142.



Description

Albumin (ALB) is the most abundant protein in human plasma and is synthesized primarily by hepatocytes in the liver. It plays essential roles in maintaining oncotic pressure, transporting hormones, fatty acids, and drugs, and regulating fluid distribution within the circulatory system. Due to its high expression in liver tissue and secretion into the bloodstream, Albumin is widely used as a marker of liver function and hepatocyte activity in biological and clinical research contexts.

Albumin antibody, also referred to as ALB antibody and serum albumin antibody in the literature, recognizes a highly abundant cytoplasmic and secreted protein that is characteristic of hepatocyte-derived tissues. In tissue-based analyses, Albumin is typically observed as strong cytoplasmic staining in hepatocytes and hepatocyte-derived tumor cells, supporting its use as a lineage marker for liver origin. In western blot analysis, Albumin is detected as a prominent band corresponding to its expected molecular weight in liver lysates, reflecting its high expression and secretion. This antibody is part of a collection of [Human Protein Microarray validated antibodies](#) that have been screened for specificity across thousands of proteins.

This Albumin Antibody / Microarray Specificity Validated Serum Protein Antibody (clone ALB/2142) is uniquely positioned for applications requiring high confidence in target specificity. Microarray-based validation provides a proteome-scale assessment of antibody binding, enabling evaluation of cross-reactivity against thousands of proteins simultaneously. This approach supports identification of antibodies with strong target selectivity and minimal off-target interactions, which is particularly important for highly abundant proteins such as Albumin where non-specific binding could complicate interpretation.

In proteome-wide microarray analysis, clone ALB/2142 demonstrates strong and specific recognition of Albumin relative to other proteins, supporting its use in applications where specificity and reproducibility are critical. This validation strategy provides an additional layer of confidence beyond standard assay-based testing, ensuring that observed signals correspond to the intended target protein.

As a mouse monoclonal antibody, clone ALB/2142 offers consistent performance for detecting Albumin in research applications. An Albumin antibody is suitable for detecting ALB expression in studies of liver biology, serum protein dynamics, and tissue characterization where validated specificity is essential for accurate interpretation.

For broader detection of Albumin in liver function and hepatocyte biology studies, see our [Albumin antibody \(clone ALB/2141\)](#).

Application Notes

The optimal dilution of the Albumin Antibody / Microarray Specificity Validated Serum Protein Antibody for each application should be determined by the researcher.

1. The prediluted format is supplied in a dropper bottle and is optimized for use in IHC. After epitope retrieval step (if required), drip mAb solution onto the tissue section and incubate at RT for 30 min.

Immunogen

Full length recombinant human protein was used as the immunogen for this human Albumin antibody.

Storage

Store the human Albumin antibody at 2-8oC (with azide) or aliquot and store at -20oC or colder (without azide).

Alternate Names

Albumin antibody, ALB antibody, Serum albumin antibody, Human serum albumin antibody, HSA antibody