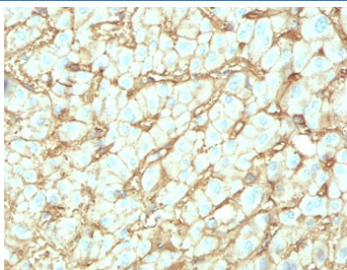


Albumin Antibody / Serum Albumin [clone ABMN-1] (V3739)

Catalog No.	Formulation	Size
V3739-100UG	0.2 mg/ml in 1X PBS with 0.05% sodium azide	100 ug
V3739-20UG	0.2 mg/ml in 1X PBS with 0.05% sodium azide	20 ug
V3739SAF-100UG	1 mg/ml in 1X PBS; sodium azide free	100 ug
V3739IHC-7ML	Prediluted in 1X PBS with 0.05% sodium azide; *For IHC use only*	7 ml

Bulk quote request

Availability	1-3 business days
Species Reactivity	Human. Other species not tested.
Format	Purified
Host	Mouse
Clonality	Monoclonal (mouse origin)
Isotype	Mouse IgG1, kappa
Clone Name	ABMN-1
Purity	Protein G affinity chromatography
UniProt	P02768
Localization	Cell surface, Cytoplasmic
Applications	ELISA : 2-4ug/ml Immunohistochemistry (FFPE) : 1-2ug/ml for 30 min at RT Prediluted IHC Only Format : incubate for 30 min at RT (1)
Limitations	This Albumin antibody is available for research use only.



IHC testing of FFPE human hepatocellular carcinoma with Albumin antibody (clone ABMN-1). Required HIER: boil tissue sections in 10mM citrate buffer, pH6, for 10-20 min followed by cooling at RT for 20 min.

Description

Serum albumin, the main protein of plasma, has a good binding capacity for water, Ca²⁺, Na⁺, K⁺, fatty acids, hormones, bilirubin and drugs. Its main function is the regulation of the colloidal osmotic pressure of blood. Major zinc transporter in plasma, typically binds about 80% of all plasma zinc. [UniProt]

For broader detection of Albumin in liver function and hepatocyte biology studies, see our [Albumin antibody \(clone ALB/2141\)](#).

Application Notes

The optimal dilution of the Albumin antibody for each application should be determined by the researcher.

1. The prediluted format is supplied in a dropper bottle and is optimized for use in IHC. After epitope retrieval step (if required), drip mAb solution onto the tissue section and incubate at RT for 30 min.

Immunogen

Recombinant protein was used as the immunogen for this Albumin antibody.

Storage

Store the Albumin antibody at 2-8°C (with azide) or aliquot and store at -20°C or colder (without azide).