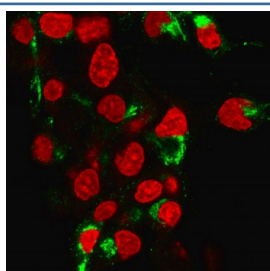


Albumin Antibody [clone ALB/2355] (V7760)

Catalog No.	Formulation	Size
V7760-100UG	0.2 mg/ml in 1X PBS with 0.1 mg/ml BSA (US sourced) and 0.05% sodium azide	100 ug
V7760-20UG	0.2 mg/ml in 1X PBS with 0.1 mg/ml BSA (US sourced) and 0.05% sodium azide	20 ug
V7760SAF-100UG	1 mg/ml in 1X PBS; BSA free, sodium azide free	100 ug

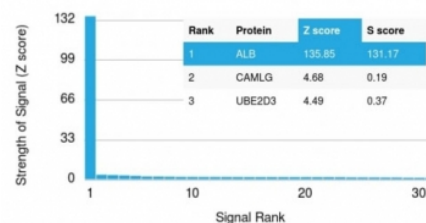
Bulk quote request

Availability	1-3 business days
Species Reactivity	Human
Format	Purified
Clonality	Monoclonal (mouse origin)
Isotype	Mouse IgG2b, kappa
Clone Name	ALB/2355
Purity	Protein G affinity chromatography
UniProt	P02768
Localization	Cell surface, cytoplasmic
Applications	Western Blot : 1-2ug/ml Immunohistochemistry (FFPE) : 1-2ug/ml Immunofluorescence : 2-4ug/ml ELISA : order BSA-free format for coating
Limitations	This Albumin antibody is available for research use only.



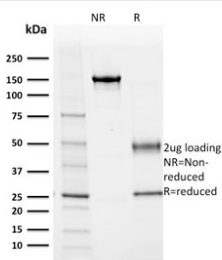
Immunofluorescent staining of human HepG2 cells with Albumin antibody (clone ALB/2355, green) and Reddot nuclear stain (red).

Human Protein Microarray Specificity Validation

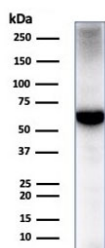


Analysis of HuProt(TM) microarray containing more than 19,000 full-length human proteins using Albumin antibody (clone ALB/2355). These results demonstrate the foremost specificity of the ALB/2355 mAb.

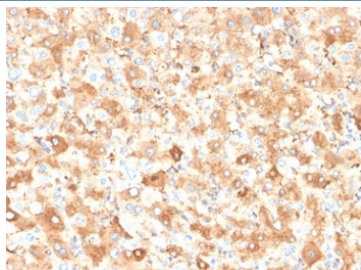
Z- and S- score: The Z-score represents the strength of a signal that an antibody (in combination with a fluorescently-tagged anti-IgG secondary Ab) produces when binding to a particular protein on the HuProt(TM) array. Z-scores are described in units of standard deviations (SD's) above the mean value of all signals generated on that array. If the targets on the HuProt(TM) are arranged in descending order of the Z-score, the S-score is the difference (also in units of SD's) between the Z-scores. The S-score therefore represents the relative target specificity of an Ab to its intended target.



SDS-PAGE analysis of purified, BSA-free Albumin antibody (clone ALB/2355) as confirmation of integrity and purity.



Western blot testing of human liver tissue lysate with Albumin antibody (clone ALB/2355). Predicted molecular weight ~66 kDa.



IHC staining of FFPE human liver carcinoma of the colon with Albumin antibody (clone ALB/2355). HIER: boil tissue sections in pH 9 10mM Tris with 1mM EDTA for 20 min and allow to cool before testing.

Description

This MAb is absolutely specific to albumin and does not show any significant cross-reaction with other human proteins. Albumin is a soluble, monomeric protein, which comprises about one half of the blood serum protein. Albumin functions primarily as a carrier protein for steroids, fatty acids, and thyroid hormones and plays a role in stabilizing extracellular fluid volume. Albumin is synthesized in the liver as prealbumin, which has an N-terminal peptide that is removed before the nascent protein is released from the rough endoplasmic reticulum. The product, proalbumin, is in turn cleaved in the Golgi vesicles to produce the secreted form of albumin.

Application Notes

Optimal dilution of the Albumin antibody should be determined by the researcher.

Immunogen

Full length recombinant protein was used as the immunogen for this Albumin antibody.

Storage

Store the Albumin antibody at 2-8°C (with azide) or aliquot and store at -20°C or colder (without azide).