

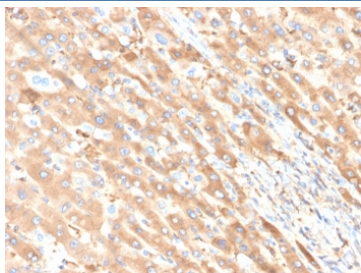
ALB Antibody / Albumin [clone ALB/6411R] (V9185)

Catalog No.	Formulation	Size
V9185-100UG	0.2 mg/ml in 1X PBS with 0.1 mg/ml BSA (US sourced), 0.05% sodium azide	100 ug
V9185-20UG	0.2 mg/ml in 1X PBS with 0.1 mg/ml BSA (US sourced), 0.05% sodium azide	20 ug
V9185SAF-100UG	1 mg/ml in 1X PBS; BSA free, sodium azide free	100 ug

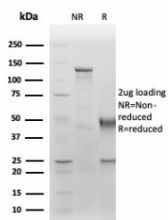
Recombinant **RABBIT MONOCLONAL**

[Bulk quote request](#)

Availability	1-3 business days
Species Reactivity	Human
Format	Purified
Host	Rabbit
Clonality	Recombinant Rabbit Monoclonal
Isotype	Rabbit IgG
Clone Name	ALB/6411R
Purity	Protein A/G affinity
UniProt	P02768
Localization	Cell surface, Cytoplasm
Applications	ELISA (order BSA-free Format For Coating) : Immunohistochemistry (FFPE) : 1-2ug/ml
Limitations	This ALB antibody is available for research use only.



IHC staining of FFPE human liver carcinoma in colon tissue with ALB antibody (clone ALB/6411R). HIER: boil tissue sections in pH 9 10mM Tris with 1mM EDTA for 20 min and allow to cool before testing.



SDS-PAGE analysis of purified, BSA-free ALB antibody (clone ALB/6411R) as confirmation of integrity and purity.

Description

Albumin is a soluble, monomeric protein, which comprises about one half of the blood serum protein. Albumin functions primarily as a carrier protein for steroids, fatty acids, and thyroid hormones and plays a role in stabilizing extracellular fluid volume. Albumin is synthesized in the liver as prealbumin, which has an N-terminal peptide that is removed before the nascent protein is released from the rough endoplasmic reticulum. The product, proalbumin, is in turn cleaved in the Golgi vesicles to produce the secreted form of albumin.

Application Notes

Optimal dilution of the ALB antibody should be determined by the researcher.

Immunogen

Recombinant full-length human ALB protein was used as the immunogen for the ALB antibody.

Storage

Aliquot the ALB antibody and store frozen at -20°C or colder. Avoid repeated freeze-thaw cycles.