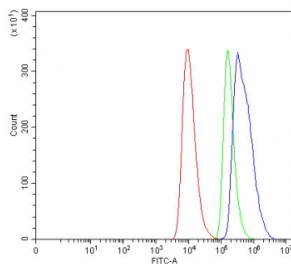


ALAS1 Antibody (RQ5867)

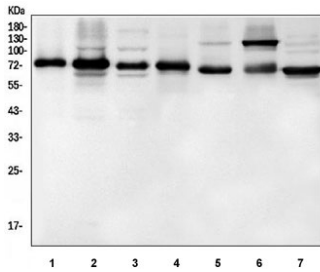
Catalog No.	Formulation	Size
RQ5867	0.5mg/ml if reconstituted with 0.2ml sterile DI water	100 ug

Bulk quote request

Availability	1-3 business days
Species Reactivity	Human, Mouse, Rat
Format	Antigen affinity purified
Host	Rabbit
Clonality	Polyclonal (rabbit origin)
Isotype	Rabbit IgG
Purity	Affinity purified
Buffer	Lyophilized from 1X PBS with 2% Trehalose and 0.025% sodium azide
UniProt	P13196
Localization	Cytoplasmic, nuclear
Applications	Western Blot : 0.5-1ug/ml Flow Cytometry : 1-3ug/million cells Direct ELISA : 0.1-0.5ug/ml
Limitations	This ALAS1 antibody is available for research use only.



Flow cytometry testing of human HEL cells with ALAS1 antibody at 1ug/million cells (blocked with goat sera); Red=cells alone, Green=isotype control, Blue= ALAS1 antibody.



Western blot testing of 1) human U-2 OS, 2) human HeLa, 3) human HepG2, 4) rat NRK, 5) rat lung, 6) mouse stomach and 7) mouse NIH 3T3 cell lysate with ALAS1 antibody. Predicted molecular weight ~71 kDa.

Description

This gene encodes the mitochondrial enzyme which catalyzes the rate-limiting step in heme (iron-protoporphyrin) biosynthesis. The enzyme encoded by this gene is the housekeeping enzyme; a separate gene encodes a form of the enzyme that is specific for erythroid tissue. The level of the mature encoded protein is regulated by heme: high levels of heme down-regulate the mature enzyme in mitochondria while low heme levels up-regulate. A pseudogene of this gene is located on chromosome 12. Alternative splicing results in multiple transcript variants encoding different isoforms.

Application Notes

Optimal dilution of the ALAS1 antibody should be determined by the researcher.

Immunogen

Recombinant human protein (amino acids M1-Q244) was used as the immunogen for the ALAS1 antibody.

Storage

After reconstitution, the ALAS1 antibody can be stored for up to one month at 4°C. For long-term, aliquot and store at -20°C. Avoid repeated freezing and thawing.