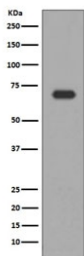


ALAS1 Antibody / 5'-Aminolevulinate synthase 1 [clone EOA-1] (RQ5401)

Catalog No.	Formulation	Size
RQ5401	Antibody in PBS with 0.02% sodium azide, 50% glycerol and 0.4-0.5mg/ml BSA	100 ul

[Bulk quote request](#)

Availability	1-2 weeks
Species Reactivity	Human
Format	Purified
Host	Rabbit
Clonality	Rabbit Monoclonal
Isotype	Rabbit IgG
Clone Name	EOA-1
Purity	Affinity purified
UniProt	P13196
Applications	Western Blot : 1:500-1:2000 Immunofluorescence/Immunocytochemistry : 1:50-1:200
Limitations	This ALAS1 antibody is available for research use only.



Western blot testing of human HepG2 cell lysate with ALAS1 antibody. Predicted molecular weight ~71 kDa.

Description

The ALAS1 gene encodes the mitochondrial enzyme which catalyzes the rate-limiting step in heme (iron-protoporphyrin) biosynthesis. The enzyme encoded by this gene is the housekeeping enzyme; a separate gene encodes a form of the enzyme that is specific for erythroid tissue. The level of the mature encoded protein is regulated by heme: high levels of heme down-regulate the mature enzyme in mitochondria while low heme levels up-regulate.

Application Notes

Optimal dilution of the ALAS1 antibody should be determined by the researcher.

Immunogen

A synthetic peptide specific to human ALAS1 was used as the immunogen for the ALAS1 antibody.

Storage

Store the ALAS1 antibody at -20oC.