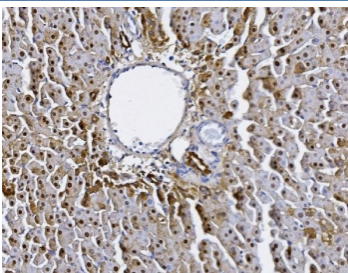


Alanine aminotransferase 1 Antibody (RQ6559)

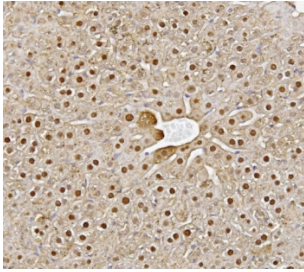
Catalog No.	Formulation	Size
RQ6559	0.5mg/ml if reconstituted with 0.2ml sterile DI water	100 ug

Bulk quote request

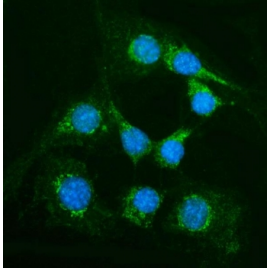
Availability	1-3 business days
Species Reactivity	Mouse, Rat
Format	Antigen affinity purified
Host	Rabbit
Clonality	Polyclonal (rabbit origin)
Isotype	Rabbit IgG
Purity	Affinity purified
Buffer	Lyophilized from 1X PBS with 2% Trehalose
UniProt	Q8QZR5
Localization	Cytoplasmic, nuclear
Applications	Western Blot : 1-2ug/ml Immunofluorescence : 5ug/ml Flow Cytometry : 1-3ug/million cells Direct ELISA : 0.1-0.5ug/ml
Limitations	This Alanine aminotransferase 1 antibody is available for research use only.



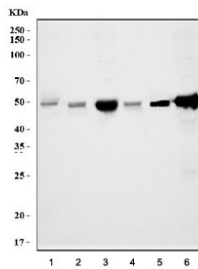
IHC staining of FFPE rat liver tissue with Alanine aminotransferase 1 antibody. HIER: boil tissue sections in pH8 EDTA for 20 min and allow to cool before testing.



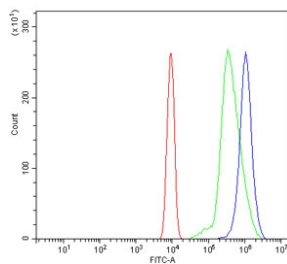
IHC staining of FFPE mouse liver tissue with Alanine aminotransferase 1 antibody. HIER: boil tissue sections in pH8 EDTA for 20 min and allow to cool before testing.



Immunofluorescent staining of FFPE mouse NIH 3T3 cells with Alanine aminotransferase 1 antibody (green) and DAPI nuclear stain (blue). HIER: steam section in pH6 citrate buffer for 20 min.



Western blot testing of 1) rat heart, 2) rat kidney, 3) rat liver, 4) mouse heart, 5) mouse kidney and 6) mouse liver lysate with Alanine aminotransferase 1 antibody. Predicted molecular weight ~55 kDa.



Flow cytometry testing of mouse ANA-1 cells with Alanine aminotransferase 1 antibody at 1ug/million cells (blocked with goat sera); Red=cells alone, Green=isotype control, Blue= Alanine aminotransferase 1 antibody.

Description

This gene encodes cytosolic alanine aminotransaminase 1 (ALT1); also known as glutamate-pyruvate transaminase 1. This enzyme catalyzes the reversible transamination between alanine and 2-oxoglutarate to generate pyruvate and glutamate and, therefore, plays a key role in the intermediary metabolism of glucose and amino acids. Serum activity levels of this enzyme are routinely used as a biomarker of liver injury caused by drug toxicity, infection, alcohol, and steatosis. A related gene on chromosome 16 encodes a putative mitochondrial alanine aminotransaminase

Application Notes

Optimal dilution of the Alanine aminotransferase 1 antibody should be determined by the researcher.

Immunogen

An E. coli-derived mouse protein (amino acids A2-S496) was used as the immunogen for the Alanine aminotransferase 1 antibody.

Storage

After reconstitution, the Alanine aminotransferase 1 antibody can be stored for up to one month at 4°C. For long-term,

aliquot and store at -20oC. Avoid repeated freezing and thawing.