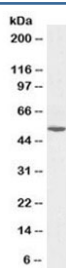


## Alanine aminotransferase 1 Antibody (R36447)

Catalog No.	Formulation	Size
R36447-100UG	0.5 mg/ml in 1X TBS, pH7.3, with 0.5% BSA (US sourced) and 0.02% sodium azide	100 ug

[Bulk quote request](#)

Availability	1-3 business days
Species Reactivity	Human
Format	Antigen affinity purified
Clonality	Polyclonal (goat origin)
Isotype	Goat Ig
Purity	Antigen affinity
UniProt	P24298
Applications	Western Blot : 0.1-0.3ug/ml ELISA (peptide) : 1:128000
Limitations	This Alanine aminotransferase 1 antibody is available for research use only.



Western blot testing of human liver lysate with Alanine aminotransferase 1 antibody at 0.1ug/ml. Predicted molecular weight ~55 kDa.

## Description

Additional name(s) for this target protein: ALT1; GPT1; Glutamate pyruvate transaminase 1

## Application Notes

The stated application concentrations are suggested starting points. Titration of the Alanine aminotransferase 1 antibody may be required due to differences in protocols and secondary/substrate sensitivity.

## Immunogen

Amino acids KLTEQVFNEAPGISC were used as the immunogen for this Alanine aminotransferase 1 antibody.

## **Storage**

Aliquot and store the Alanine aminotransferase 1 antibody at -20oC.