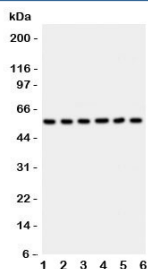


## AKT2 Antibody (R31474)

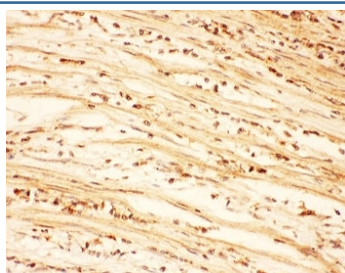
Catalog No.	Formulation	Size
R31474	0.5mg/ml if reconstituted with 0.2ml sterile DI water	100 ug

**Bulk quote request**

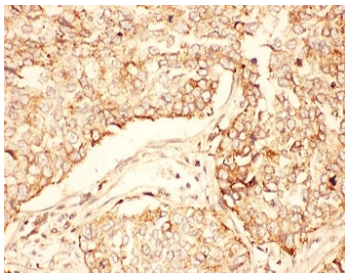
<b>Availability</b>	1-3 business days
<b>Species Reactivity</b>	Human, Mouse, Rat
<b>Format</b>	Antigen affinity purified
<b>Host</b>	Rabbit
<b>Clonality</b>	Polyclonal (rabbit origin)
<b>Isotype</b>	Rabbit IgG
<b>Purity</b>	Antigen affinity
<b>Buffer</b>	Lyophilized from 1X PBS with 2.5% BSA and 0.025% sodium azide
<b>Gene ID</b>	208
<b>Applications</b>	Western Blot : 0.5-1ug/ml IHC (FFPE) : 0.5-1ug/ml IHC (Frozen) : 0.5-1ug/ml
<b>Limitations</b>	This AKT2 antibody is available for research use only.



Western blot testing of AKT2 antibody and Lane 1: HeLa; 2: PANC; 3: A549; 4: COLO320; 5: HT1080; 6: MCF-7 lysate. Predicted molecular weight: ~56kDa.



IHC-P: AKT2 antibody testing of human intestine cancer tissue



IHC-P: AKT2 antibody testing of human lung cancer tissue

## Description

AKT2 is a putative oncogene encoding a protein belonging to a subfamily of serine/threonine kinases containing SH2-like (Src homology 2-like) domains. This gene is mapped to 19q13.2. AKT2 is one of 3 closely related serine/threonine-protein kinases (AKT1, -2 and -3) called the AKT kinase, and which regulate many processes including metabolism, proliferation, cell survival, growth and angiogenesis. AKT2 seems also to be the principal isoform responsible of the regulation of glucose uptake. It is also specifically involved in skeletal muscle differentiation, one of its substrates in this process being ANKRD2. Overexpression contributes to the malignant phenotype of a subset of human ductal pancreatic cancers.

## Application Notes

The stated application concentrations are suggested starting amounts. Titration of the AKT2 antibody may be required due to differences in protocols and secondary/substrate sensitivity.

## Immunogen

An amino acid sequence from the C-terminus of human AKT2 (DRYDSLGLLELDQRTTHFPQFSYSASIRE) was used as the immunogen for this AKT2 antibody.

## Storage

After reconstitution, the AKT2 antibody can be stored for up to one month at 4°C. For long-term, aliquot and store at -20°C. Avoid repeated freezing and thawing.