

## AKT2 Antibody (F50044)

Catalog No.	Formulation	Size
F50044-0.4ML	In 1X PBS, pH 7.4, with 0.09% sodium azide	0.4 ml
F50044-0.08ML	In 1X PBS, pH 7.4, with 0.09% sodium azide	0.08 ml

[Bulk quote request](#)

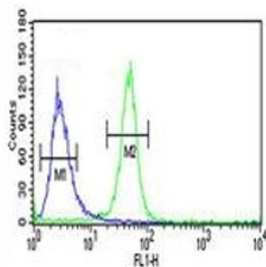
<b>Availability</b>	1-3 business days
<b>Species Reactivity</b>	Human, Mouse
<b>Format</b>	Antigen affinity purified
<b>Host</b>	Rabbit
<b>Clonality</b>	Polyclonal (rabbit origin)
<b>Isotype</b>	Rabbit Ig
<b>Purity</b>	Antigen affinity
<b>UniProt</b>	P31751
<b>Applications</b>	Western Blot : 1:1000 Flow Cytometry : 1:10-1:50 Immunofluorescence : 1:10-1:50
<b>Limitations</b>	This AKT2 antibody is available for research use only.



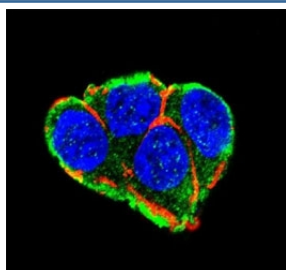
Western blot analysis of AKT2 antibody and mouse brain tissue lysate. Predicted molecular weight: ~56kDa.



Western blot analysis of AKT2 antibody and NCI-H460 lysate. Predicted molecular weight: ~56kDa.



AKT2 antibody flow cytometric analysis of NCI-H460 cells (green) compared to a negative control (blue).



Confocal immunofluorescent analysis of AKT2 antibody with 293 cells followed by Alexa Fluor 488-conjugated goat anti-rabbit IgG (green), Actin filaments (red) and DAPI nuclear counterstain (blue).

## Description

AKT2 is a putative oncogenic protein belonging to a subfamily of serine/threonine kinases containing SH2-like (Src homology 2-like) domains. AKT2 is a general protein kinase capable of phosphorylating several known proteins.

## Application Notes

The stated application concentrations are suggested starting amounts. Titration of the AKT2 antibody may be required due to differences in protocols and secondary/substrate sensitivity.

## Immunogen

This AKT2 antibody was produced from rabbits immunized with human AKT2 recombinant protein.

## Storage

Store at 4°C for up to one month. For long term, aliquot the AKT2 antibody and store frozen at -20°C or colder. Avoid repeated freeze-thaw cycles.