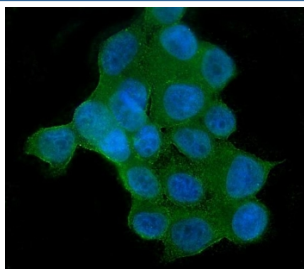


AKT2 Antibody [clone 10C6] (RQ4627)

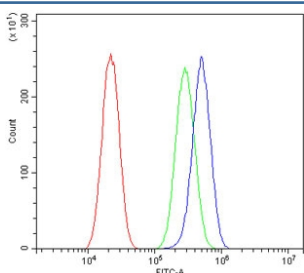
Catalog No.	Formulation	Size
RQ4627	0.5mg/ml if reconstituted with 0.2ml sterile DI water	100 ug

Bulk quote request

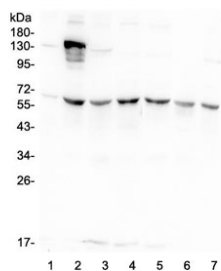
Availability	1-3 business days
Species Reactivity	Human
Format	Purified
Clonality	Monoclonal (mouse origin)
Isotype	Mouse IgG1
Clone Name	10C6
Purity	Protein G affinity
Buffer	Lyophilized from 1X PBS with 2% Trehalose and 0.025% sodium azide
UniProt	P31751
Applications	Western Blot : 0.5-1ug/ml Immunofluorescence (FFPE) : 2-4ug/ml Flow Cytometry : 1-3ug/million cells
Limitations	This AKT2 antibody is available for research use only.



Immunofluorescent staining of FFPE human MCF7 cells with AKT2 antibody (green) and DAPI nuclear stain (blue). HIER: steam section in pH6 citrate buffer for 20 min.



Flow cytometry testing of human A549 cells with AKT2 antibody at 1ug/million cells (blocked with goat sera); Red=cells alone, Green=isotype control, Blue= AKT2 antibody.



Western blot testing of human 1) A549, 2) 293T, 3) HeLa, 4) Caco-2, 5) K562, 6) HL60 and 7) PC-3 lysate with AKT2 antibody at 0.5ug/ml. Predicted molecular weight ~56 kDa.

Description

AKT2 is a putative oncogene encoding a protein belonging to a subfamily of serine/threonine kinases containing SH2-like (Src homology 2-like) domains. This gene is mapped to 19q13.2. AKT2 is one of 3 closely related serine/threonine-protein kinases (AKT1, AKT2 and AKT3) called the AKT kinase, and which regulate many processes including metabolism, proliferation, cell survival, growth and angiogenesis. AKT2 seems also to be the principal isoform responsible of the regulation of glucose uptake. AKT2 is also specifically involved in skeletal muscle differentiation, one of its substrates in this process being ANKRD2. Overexpression of AKT2 contributes to the malignant phenotype of a subset of human ductal pancreatic cancers.

Application Notes

Optimal dilution of the AKT2 antibody should be determined by the researcher.

Immunogen

Amino acids DRYDSLGLLELDQRTHFPQFSYSASIRE were used as the immunogen for the AKT2 antibody.

Storage

After reconstitution, the AKT2 antibody can be stored for up to one month at 4oC. For long-term, aliquot and store at -20oC. Avoid repeated freezing and thawing.