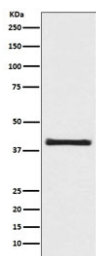


AKT1S1 Antibody / PRAS40 [clone ABIO-1] (RQ5492)

Catalog No.	Formulation	Size
RQ5492	Antibody in PBS with 0.02% sodium azide, 50% glycerol and 0.4-0.5mg/ml BSA	100 ul

[Bulk quote request](#)

Availability	1-2 weeks
Species Reactivity	Human
Format	Purified
Host	Rabbit
Clonality	Rabbit Monoclonal
Isotype	Rabbit IgG
Clone Name	ABIO-1
Purity	Affinity purified
UniProt	Q96B36
Applications	Western Blot : 1:500-1:2000
Limitations	This AKT1S1 antibody is available for research use only.



Western blot testing of human 293T cell lysate with AKT1S1 antibody. Expected molecular weight ~40 kDa.

Description

AKT1S1 is a substrate for AKT1 phosphorylation, but can also be activated by AKT1-independent mechanisms. It may also play a role in nerve growth factor-mediated neuroprotection. [UniProt]

Application Notes

Optimal dilution of the AKT1S1 antibody should be determined by the researcher.

Immunogen

A synthetic peptide specific to human AKT1S1 / PRAS40 was used as the immunogen for the AKT1S1 antibody.

Storage

Store the AKT1S1 antibody at -20oC.