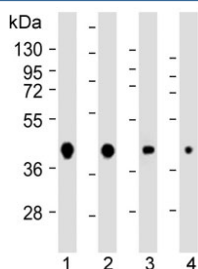


AKT1S1 Antibody / PRAS40 [clone 1997CT730.74.73] (F54225)

Catalog No.	Formulation	Size
F54225-0.2ML	In 1X PBS, pH 7.4, with 0.09% sodium azide	0.2 ml
F54225-0.05ML	In 1X PBS, pH 7.4, with 0.09% sodium azide	0.05 ml

[Bulk quote request](#)

Availability	1-3 business days
Species Reactivity	Human, Mouse
Format	Purified
Host	Mouse
Clonality	Monoclonal (mouse origin)
Isotype	Mouse IgG1, kappa
Clone Name	1997CT730.74.73
Purity	Purified
UniProt	Q96B36
Applications	Western Blot : 1:500-1:4000
Limitations	This AKT1S1 antibody is available for research use only.



Western blot testing of human 1) 293, 2) HeLa, 3) MCF7 and 4) mouse NIH3T3 cell lysate with AKT1S1 antibody. Expected molecular weight ~40 kDa.

Description

AKT1S1 is a proline-rich substrate of AKT that binds 14-3-3 protein when phosphorylated. [supplied by OMIM].

Application Notes

Titration of the AKT1S1 antibody may be required due to differences in protocols and secondary/substrate sensitivity.

Immunogen

Purified His-tagged protein fragment was used to produced this monoclonal AKT1S1 antibody.

Storage

Aliquot the AKT1S1 antibody and store frozen at -20oC or colder. Avoid repeated freeze-thaw cycles.