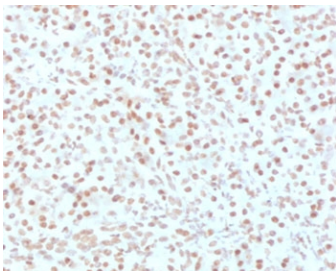


## AKT1 Antibody [clone RASTPK-1] (V3798)

| Catalog No.    | Formulation  | Size   |
|----------------|--|--------|
| V3798-100UG    | 0.2 mg/ml in 1X PBS with 0.1 mg/ml BSA (US sourced) and 0.05% sodium azide | 100 ug |
| V3798-20UG     | 0.2 mg/ml in 1X PBS with 0.1 mg/ml BSA (US sourced) and 0.05% sodium azide | 20 ug  |
| V3798SAF-100UG | 1 mg/ml in 1X PBS; BSA free, sodium azide free                             | 100 ug |

### Bulk quote request

|                           |  |
|---------------------------|--|
| <b>Availability</b>       | 1-3 business days                                      |
| <b>Species Reactivity</b> | Human  |
| <b>Format</b>             | Purified   |
| <b>Host</b>               | Mouse  |
| <b>Clonality</b>          | Monoclonal (mouse origin)                              |
| <b>Isotype</b>            | Mouse IgG2b, kappa                                     |
| <b>Clone Name</b>         | RASTPK-1   |
| <b>Purity</b>             | Protein G affinity chromatography                      |
| <b>UniProt</b>            | P31749   |
| <b>Localization</b>       | Nucleus, plasma membrane, cytoplasm                    |
| <b>Applications</b>       | IHC (FFPE) : 1-2ug/ml for 30 min at RT                 |
| <b>Limitations</b>        | This AKT1 antibody is available for research use only. |



IHC testing of FFPE human pancreas with AKT1 antibody (clone RASTPK-1). HIER: boil tissue sections in pH 9 10mM Tris with 1mM EDTA for 10-20 min followed by cooling at RT for 20 min.

## Description

AKT1 is one of 3 closely related serine/threonine-protein kinases (AKT1, AKT2 and AKT3) called the AKT kinase, and which regulate many processes including metabolism, proliferation, cell survival, growth and angiogenesis. This is mediated through serine and/or threonine phosphorylation of a range of downstream substrates. [UniProt]

For a microarray-validated AKT1 antibody supporting high-specificity detection, see our [AKT1 antibody \(clone AKT1/2552\)](#).

## Application Notes

The stated application concentrations are suggested starting points. Titration of the AKT1 antibody may be required due to differences in protocols and secondary/substrate sensitivity.

## Immunogen

A portion of amino acids 85-189 from the human protein was used as the immunogen for the AKT1 antibody.

## Storage

Store the AKT1 antibody at 2-8oC (with azide) or aliquot and store at -20oC or colder (without azide).