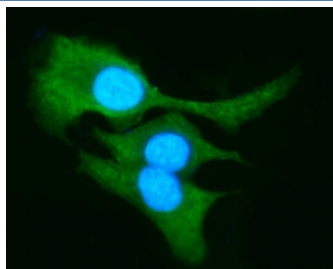


## AKR1B10 Antibody (R32646)

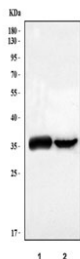
Catalog No.	Formulation	Size
R32646	0.5mg/ml if reconstituted with 0.2ml sterile DI water	100 ug

[Bulk quote request](#)

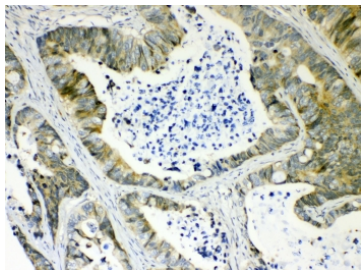
<b>Availability</b>	1-3 business days
<b>Species Reactivity</b>	Human
<b>Format</b>	Antigen affinity purified
<b>Host</b>	Rabbit
<b>Clonality</b>	Polyclonal (rabbit origin)
<b>Isotype</b>	Rabbit IgG
<b>Purity</b>	Antigen affinity
<b>Buffer</b>	Lyophilized from 1X PBS with 2% Trehalose and 0.025% sodium azide
<b>UniProt</b>	O60218
<b>Localization</b>	Cytoplasmic, secreted
<b>Applications</b>	Western Blot : 0.5-1ug/ml Immunohistochemistry (FFPE) : 1-2ug/ml Immunofluorescence : 5ug/ml
<b>Limitations</b>	This AKR1B10 antibody is available for research use only.



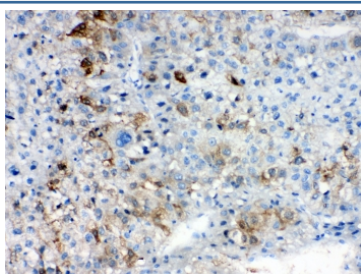
Immunofluorescent staining of FFPE human A549 cells with AKR1B10 antibody (green) and DAPI nuclear stain (blue). HIER: steam section in pH6 citrate buffer for 20 min.



Western blot testing of human 1) A549 and 2) HepG2 cell lysate with AKR1B10 antibody. Predicted molecular weight ~36 kDa.



IHC testing of FFPE human intestinal cancer tissue with AKR1B10 antibody. Required HIER: steam section in pH6 citrate buffer for 20 min and allow to cool prior to testing.



IHC testing of FFPE human liver cancer tissue with AKR1B10 antibody. Required HIER: steam section in pH6 citrate buffer for 20 min and allow to cool prior to testing.

## Description

Aldo-keto reductase family 1 member B10 is an enzyme that in humans is encoded by the AKR1B10 gene. This gene encodes a member of the aldo/keto reductase superfamily, which consists of more than 40 known enzymes and proteins. This member can efficiently reduce aliphatic and aromatic aldehydes, and it is less active on hexoses. It is highly expressed in adrenal gland, small intestine, and colon, and may play an important role in liver carcinogenesis.

## Application Notes

Optimal dilution of the AKR1B10 antibody should be determined by the researcher.

## Immunogen

Amino acids 285-316 (EMATILSFNRNWRACNVLQSSHLEDYPFNAEY) from the human protein were used as the immunogen for the AKR1B10 antibody.

## Storage

After reconstitution, the AKR1B10 antibody can be stored for up to one month at 4°C. For long-term, aliquot and store at -20°C. Avoid repeated freezing and thawing.

