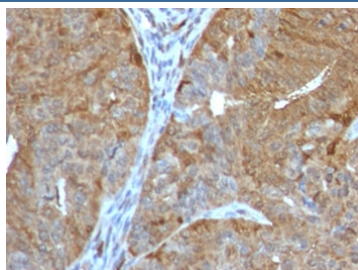


AKR1B1 Antibody / Aldose reductase [clone ADRD1-1] (V3975)

Catalog No.	Formulation	Size
V3975-100UG	0.2 mg/ml in 1X PBS with 0.1 mg/ml BSA (US sourced) and 0.05% sodium azide	100 ug
V3975-20UG	0.2 mg/ml in 1X PBS with 0.1 mg/ml BSA (US sourced) and 0.05% sodium azide	20 ug
V3975SAF-100UG	1 mg/ml in 1X PBS; sodium azide free	100 ug
V3975IHC-7ML	Prediluted in 1X PBS with 0.1 mg/ml BSA (US sourced) and 0.05% sodium azide; *For IHC use only*	7 ml

[Bulk quote request](#)

Availability	1-3 business days
Species Reactivity	Human
Format	Purified
Host	Mouse
Clonality	Monoclonal (mouse origin)
Isotype	Mouse IgG1
Clone Name	ADRD1-1
Purity	Protein G affinity chromatography
UniProt	P15121
Localization	Cytoplasmic, nuclear
Applications	Western Blot : 0.5-1ug/ml Immunohistochemistry (FFPE) : 0.5-1ug/ml for 30 min at RT Prediluted IHC Only Format : incubate for 30 min at RT (1)
Limitations	This AKR1B1 antibody is available for research use only.



IHC testing of FFPE human prostate cancer with AKR1B1 antibody (clone ADRD1-1). Required HIER: boil tissue sections in 10mM citrate buffer, pH6, for 10-20 min followed by cooling at RT for 20 min.



Western blot testing of human HeLa cell lysate with AKR1B1 antibody (clone ADRD1-1).
Predicted molecular weight ~36 kDa.

Description

The AKR1B1 gene encodes a member of the aldo/keto reductase superfamily, which consists of more than 40 known enzymes and proteins. This member catalyzes the reduction of a number of aldehydes, including the aldehyde form of glucose, and is thereby implicated in the development of diabetic complications by catalyzing the reduction of glucose to sorbitol. Multiple pseudogenes have been identified for this gene. The nomenclature system used by the HUGO Gene Nomenclature Committee to define human aldo-keto reductase family members is known to differ from that used by the Mouse Genome Informatics database. [RefSeq]

Application Notes

The optimal dilution of the AKR1B1 antibody for each application should be determined by the researcher.

1. The prediluted format is supplied in a dropper bottle and is optimized for use in IHC. After epitope retrieval step (if required), drip mAb solution onto the tissue section and incubate at RT for 30 min.

Immunogen

Recombinant protein was used as the immunogen for this AKR1B1 antibody.

Storage

Store the AKR1B1 antibody at 2-8°C (with azide) or aliquot and store at -20°C or colder (without azide).