

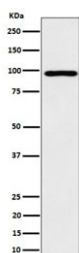
AKAP8 Antibody / A-kinase anchor protein 8 / AKAP 95 [clone 29A07] (RQ8698)

Catalog No.	Formulation	Size
RQ8698	Antibody in PBS with 0.02% sodium azide, 50% glycerol and 0.4-0.5mg/ml BSA	100 ul

Recombinant **RABBIT MONOCLONAL**

[Bulk quote request](#)

Availability	1-3 days
Species Reactivity	Human
Format	Purified
Clonality	Recombinant Rabbit Monoclonal
Isotype	Rabbit IgG
Clone Name	29A07
Purity	Affinity chromatography
UniProt	O43823
Applications	Western Blot : 1:500-1:2000
Limitations	This AKAP8 antibody is available for research use only.



Western blot testing of human HepG2 cell lysate with AKAP8 antibody. Predicted molecular weight ~76 kDa but routinely observed at ~95 kDa.

Description

AKAP8 is an anchoring protein that mediates the subcellular compartmentation of cAMP-dependent protein kinase. Acts as an anchor for a PKA-signaling complex onto mitotic chromosomes, which is required for maintenance of chromosomes in a condensed form throughout mitosis. Recruits condensin complex subunit NCAPD2 to chromosomes required for chromatin condensation; the function appears to be independent from PKA-anchoring. [UniProt]

Application Notes

Optimal dilution of the AKAP8 antibody should be determined by the researcher.

Immunogen

A synthetic peptide specific to human A-kinase anchor protein 8 was used as the immunogen for the AKAP8 antibody.

Storage

Store the AKAP8 antibody at -20oC.