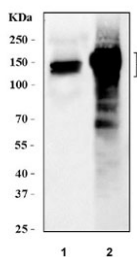


## AKAP2 Antibody / A-kinase anchor protein 2 (R32805)

Catalog No.	Formulation	Size
R32805	0.5mg/ml if reconstituted with 0.2ml sterile DI water	100 ug

**Bulk quote request**

<b>Availability</b>	1-3 business days
<b>Species Reactivity</b>	Human, Mouse
<b>Format</b>	Antigen affinity purified
<b>Clonality</b>	Polyclonal (rabbit origin)
<b>Isotype</b>	Rabbit IgG
<b>Purity</b>	Antigen affinity
<b>Buffer</b>	Lyophilized from 1X PBS with 2% Trehalose
<b>UniProt</b>	Q9Y2D5
<b>Applications</b>	Western Blot : 0.5-1ug/ml
<b>Limitations</b>	This AKAP2 antibody is available for research use only.



Western blot testing of 1) human PC-3 and 2) mouse lung tissue lysate with AKAP2 antibody at 0.5ug/ml. Predicted molecular weight ~95 kDa (multiple isoforms).

### Description

A-kinase anchor protein 2 is an enzyme that in humans is encoded by the AKAP2 gene. It is mapped to 9q31.3. The protein encoded by this gene binds to the regulatory subunit of protein kinase A and is found associated with the actin cytoskeleton. The encoded protein mediates signals carried by cAMP and may be involved in creating polarity in certain signaling processes. Three transcript variants encoding different isoforms have been found for this gene.

### Application Notes

Optimal dilution of the AKAP2 antibody should be determined by the researcher.

## Immunogen

Amino acids 813-852 (ETHKSKRRERMDDSSVLEATRVNRRKSALALRWEAGIYAN) from the human protein were used as the immunogen for the AKAP2 antibody.

## Storage

After reconstitution, the AKAP2 antibody can be stored for up to one month at 4°C. For long-term, aliquot and store at -20°C. Avoid repeated freezing and thawing.