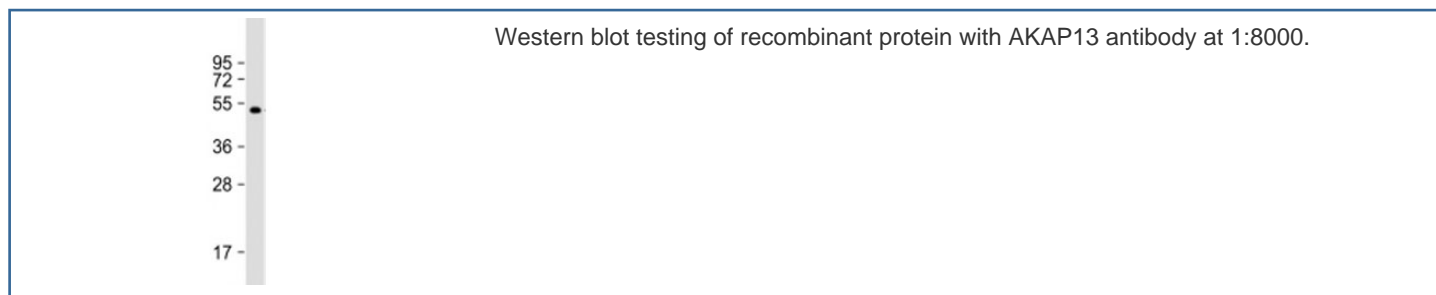


AKAP13 Antibody [clone 1742CT411.87.24] (F53944)

Catalog No.	Formulation	Size
F53944-0.2ML	In 1X PBS, pH 7.4, with 0.09% sodium azide	0.2 ml
F53944-0.05ML	In 1X PBS, pH 7.4, with 0.09% sodium azide	0.05 ml

[Bulk quote request](#)

Availability	1-3 business days
Species Reactivity	Human
Format	Purified
Clonality	Monoclonal (mouse origin)
Isotype	Mouse IgG1, kappa
Clone Name	1742CT411.87.24
Purity	Protein G affinity chromatography
UniProt	Q12802
Applications	Western Blot : 1:4000-8000
Limitations	This AKAP13 antibody is available for research use only.



Description

A-kinase anchor protein 13 anchors cAMP-dependent protein kinase (PKA) and acts as an adapter protein to selectively couple G alpha-13 and Rho. Augments gene activation by the estrogen receptor in an element- specific and ligand-dependent manner. Activates estrogen receptor beta by a p38 MAPK-dependent pathway. Stimulates exchange activity on Rho proteins in vitro, but not on CDC42, Ras or Rac and may bind calcium ions.

Application Notes

Titration of the AKAP13 antibody may be required due to differences in protocols and secondary/substrate sensitivity.

Immunogen

A partial recombinant protein corresponding to amino acids 18-170 from the human protein was used as the immunogen for the AKAP13 antibody.

Storage

Aliquot the AKAP13 antibody and store frozen at -20oC or colder. Avoid repeated freeze-thaw cycles.