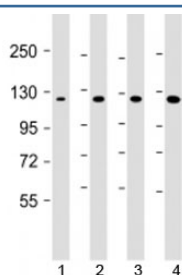


## AIP1 Antibody / DAB2IP [clone 1626CT702.263.21] (F53806)

Catalog No.	Formulation	Size
F53806-0.2ML	In 1X PBS, pH 7.4, with 0.09% sodium azide	0.2 ml
F53806-0.05ML	In 1X PBS, pH 7.4, with 0.09% sodium azide	0.05 ml

[Bulk quote request](#)

<b>Availability</b>	1-3 business days
<b>Species Reactivity</b>	Human, Mouse
<b>Format</b>	Purified
<b>Clonality</b>	Monoclonal (mouse origin)
<b>Isotype</b>	Mouse IgG2a, kappa
<b>Clone Name</b>	1626CT702.263.21
<b>Purity</b>	Protein G affinity chromatography
<b>UniProt</b>	Q5VWQ8
<b>Applications</b>	Western Blot : 1:500-1000
<b>Limitations</b>	This AIP1 antibody is available for research use only.



Western blot testing of 1) human DU-145, 2) human HepG2, 3) mouse brain and 4) HeLa cell lysate with AIP1 antibody at 1:1000. Predicted molecular weight: 132 kDa.

## Description

ASK-interacting protein 1 functions as a scaffold protein implicated in the regulation of a large spectrum of both general and specialized signaling pathways. Involved in several processes such as innate immune response, inflammation and cell growth inhibition, apoptosis, cell survival, angiogenesis, cell migration and maturation. Plays also a role in cell cycle checkpoint control; reduces G1 phase cyclin levels resulting in G0/G1 cell cycle arrest. [UniProt]

## Application Notes

Titration of the AIP1 antibody may be required due to differences in protocols and substrate sensitivity.

## **Immunogen**

Human recombinant protein corresponding to amino acids 782-1038 was used as the immunogen for this AIP1 antibody.

## **Storage**

Aliquot the AIP1 antibody and store frozen at -20oC or colder. Avoid repeated freeze-thaw cycles.