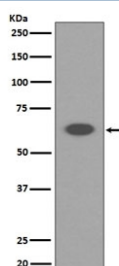


AIFM1 Antibody / AIF / Apoptosis-Inducing Factor [clone GH-1] (RQ4816)

Catalog No.	Formulation	Size
RQ4816	Antibody in PBS with 0.02% sodium azide, 50% glycerol and 0.4-0.5mg/ml BSA	100 ul

[Bulk quote request](#)

Availability	1-2 weeks
Species Reactivity	Human
Format	Purified
Clonality	Rabbit Monoclonal
Isotype	Rabbit IgG
Clone Name	GH-1
Purity	Affinity purified
UniProt	O95831
Applications	Western Blot : 1:500-1:2000
Limitations	This AIFM1 antibody is available for research use only.



Western blot testing of human K562 cell lysate with AIFM1 antibody. Predicted molecular weight ~67 kDa.

Description

'Apoptosis-inducing factor 1, mitochondrial' functions both as NADH oxidoreductase and as regulator of apoptosis. In response to apoptotic stimuli, it is released from the mitochondrion intermembrane space into the cytosol and to the nucleus, where it functions as a proapoptotic factor in a caspase-independent pathway. In contrast, functions as an antiapoptotic factor in normal mitochondria via its NADH oxidoreductase activity.

Application Notes

Optimal dilution of the AIFM1 antibody should be determined by the researcher.

Immunogen

A synthetic peptide specific to human AIF / AIFM1 was used as the immunogen for the AIFM1 antibody.

Storage

Store the AIFM1 antibody at -20oC.