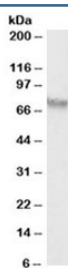


AFP Antibody (R34368)

Catalog No.	Formulation	Size
R34368-100UG	0.5 mg/ml in 1X TBS, pH7.3, with 0.5% BSA (US sourced) and 0.02% sodium azide	100 ug

[Bulk quote request](#)

Availability	1-3 business days
Species Reactivity	Human
Format	Antigen affinity purified
Clonality	Polyclonal (goat origin)
Isotype	Goat Ig
Purity	Antigen affinity
Gene ID	174
Applications	Western Blot : 0.3-1ug/ml ELISA (peptide) LOD : 1:128000
Limitations	This AFP antibody is available for research use only.



Western blot testing of HepG2 lysate with AFP antibody at 0.3ug/ml. Predicted molecular weight: ~70kDa.

Description

Additional name(s) for this target protein: Alpha-fetoprotein, FETA, HPAFP

Application Notes

Optimal dilution of the AFP antibody should be determined by the researcher.

Immunogen

Amino acids KDALTAIEKPTGDEQ were used as the immunogen for this AFP antibody.

Storage

Aliquot and store the AFP antibody at -20oC.