

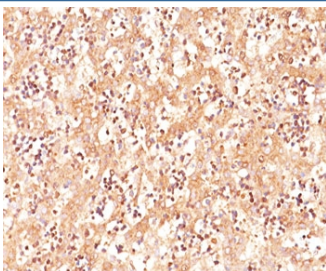
AFP Antibody / Alpha Fetoprotein [clone C3] (V2002)

Catalog No.	Formulation	Size
V2002-100UG	0.2 mg/ml in 1X PBS with 0.1 mg/ml BSA (US sourced) and 0.05% sodium azide	100 ug
V2002-20UG	0.2 mg/ml in 1X PBS with 0.1 mg/ml BSA (US sourced) and 0.05% sodium azide	20 ug
V2002SAF-100UG	1 mg/ml in 1X PBS; BSA free, sodium azide free	100 ug
V2002IHC-7ML	Prediluted in 1X PBS with 0.1 mg/ml BSA (US sourced) and 0.05% sodium azide; *For IHC use only*	7 ml

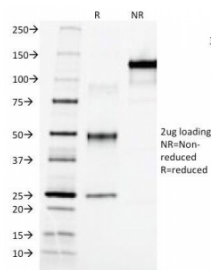
 Citations (16)

[Bulk quote request](#)

Species Reactivity	Human
Format	Purified
Host	Mouse
Clonality	Monoclonal (mouse origin)
Isotype	Mouse IgG2a, kappa
Clone Name	C3
Purity	Protein G affinity chromatography
Buffer	1X PBS, pH 7.4
Gene ID	174
Localization	Cytoplasmic
Applications	Immunohistochemistry (FFPE) : 1-2ug/ml for 30 min at RT
Limitations	This Alpha Fetoprotein / AFP antibody is available for research use only.



AFP Antibody Human Fetal Liver Tissue IHC. Immunohistochemistry testing of human fetal liver stained with AFP antibody (clone C3).



SDS-PAGE Analysis of Purified, BSA-Free AFP Antibody (clone C3). Confirmation of Integrity and Purity of the Antibody.

Description

This antibody recognizes an oncofetal glycoprotein with a single chain of 70kDa, which is identified as Alpha fetoprotein (AFP). The AFP antibody is highly specific and shows no cross-reaction with other oncofetal antigens or serum albumin. Alpha fetoprotein is normally synthesized in the liver, intestinal tract, and yolk sac of the fetus. AFP antibody has been shown to be useful in detecting hepatocellular carcinomas (HCC) and germ cell neoplasms, especially yolk sac tumors.

This antibody can be compared with our [AFP Antibody cocktail](#) (clones C2 + C3 + MBS-12) for robust detection of alpha fetoprotein across multiple assay formats in tumor marker studies.

Application Notes

The concentration stated for each application is a general starting point. Variations in protocols, secondaries and substrates may require the AFP antibody to be titrated up or down for optimal performance.

1. No special pretreatment is required for the immunohistochemical staining of formalin-fixed, paraffin-embedded tissues.
2. The prediluted format is supplied in a dropper bottle and is optimized for use in IHC. After epitope retrieval step (if required), drip mAb solution onto the tissue section and incubate at RT for 30 min.

Immunogen

Alpha fetoprotein purified from serum of a hepatoma patient was used as the immunogen for this AFP antibody.

Storage

Store the AFP antibody at 2-8oC.

Alternate Names

Alpha fetoglobulin; FETA; HPAFP, Alpha fetoprotein, AFP antibody

References (1)