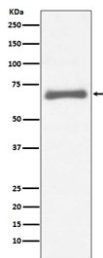


AFP Antibody / Alpha Fetoprotein [clone AAOO-1] (RQ5012)

Catalog No.	Formulation	Size
RQ5012	Antibody in PBS with 0.02% sodium azide, 50% glycerol and 0.4-0.5mg/ml BSA	100 ul

[Bulk quote request](#)

Availability	1-2 weeks
Species Reactivity	Human
Format	Purified
Host	Rabbit
Clonality	Rabbit Monoclonal
Isotype	Rabbit IgG
Clone Name	AAOO-1
Purity	Affinity purified
UniProt	P02771
Applications	Western Blot : 1:500-1:2000
Limitations	This AFP antibody is available for research use only.



Western blot testing of human HepG2 cell lysate with AFP antibody. Predicted molecular weight ~70 kDa.

Description

This gene encodes alpha-fetoprotein, a major plasma protein produced by the yolk sac and the liver during fetal life. Alpha-fetoprotein expression in adults is often associated with hepatoma or teratoma. However, hereditary persistence of alpha-fetoprotein may also be found in individuals with no obvious pathology. The protein is thought to be the fetal counterpart of serum albumin, and the alpha-fetoprotein and albumin genes are present in tandem in the same transcriptional orientation on chromosome 4. Alpha-fetoprotein is found in monomeric as well as dimeric and trimeric forms, and binds copper, nickel, fatty acids and bilirubin. The level of alpha-fetoprotein in amniotic fluid is used to

measure renal loss of protein to screen for spina bifida and anencephaly. [RefSeq]

This antibody can be compared with our [AFP Antibody cocktail](#) (clones C2 + C3 + MBS-12) for robust detection of alpha fetoprotein across multiple assay formats in tumor marker studies.

Application Notes

Optimal dilution of the AFP antibody should be determined by the researcher.

Immunogen

A synthetic peptide specific to human Alpha 1 Fetoprotein / AFP was used as the immunogen for the AFP antibody.

Storage

Store the AFP antibody at -20oC.