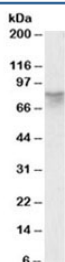


AFM Antibody (R34834)

Catalog No.	Formulation	Size
R34834-100UG	0.5 mg/ml in 1X TBS, pH7.3, with 0.5% BSA (US sourced) and 0.02% sodium azide	100 ug

Bulk quote request

Availability	1-3 business days
Species Reactivity	Human
Predicted Reactivity	Cow, Dog, Mouse, Rat
Format	Antigen affinity purified
Clonality	Polyclonal (goat origin)
Isotype	Goat Ig
Purity	Antigen affinity
Gene ID	173
Applications	Western Blot : 0.3-1ug/ml ELISA (peptide) LOD : 1:16000
Limitations	This AFM antibody is available for research use only.



Western blot testing of human cerebellum lysate with AFM antibody at 0.3ug/ml.
Predicted molecular weight: ~69/87kDa (unmodified/glycosylated).

Description

Additional name(s) for this target protein: Afamin, ALF, alpha Albumin

Application Notes

Optimal dilution of the AFM antibody should be determined by the researcher.

Immunogen

Amino acids NKDDRPKDLSLRE were used as the immunogen for this AFM antibody.

Storage

Aliquot and store the AFM antibody at -20oC.